

- Dimensions are in millimeters, unless stated otherwise.
 - It is the recipient's responsibility to print this document to the correct scale.
 - All relevant drawings and specifications should be read in conjunction with this drawing.

N **Key**

Application Boundary
 (OS Licence Number - 100022432)



Existing Trees Retained

Note: For Detail arboriculture information see Detailed Landscape Information.

F	Substation relocated to NE portion of the site.	MT	AJL	27.10.21
E	Schedule total clarified.	LAH	AJL	25.10.21
D	Drawing updated to suit 40 meter arrangement.	LAH	AJL	19.10.21
C	7No. Dual Electric Car Charge Post Indicated.	LAH	AJL	17.03.20
B	Drawing Notes Clarified.	LAH	AJL	07.01.19
A	First Issue	LAH	AJL	26.11.19
rev	amendments	by	ckd	date

Industrial Scheme, Fleet

Site Layout

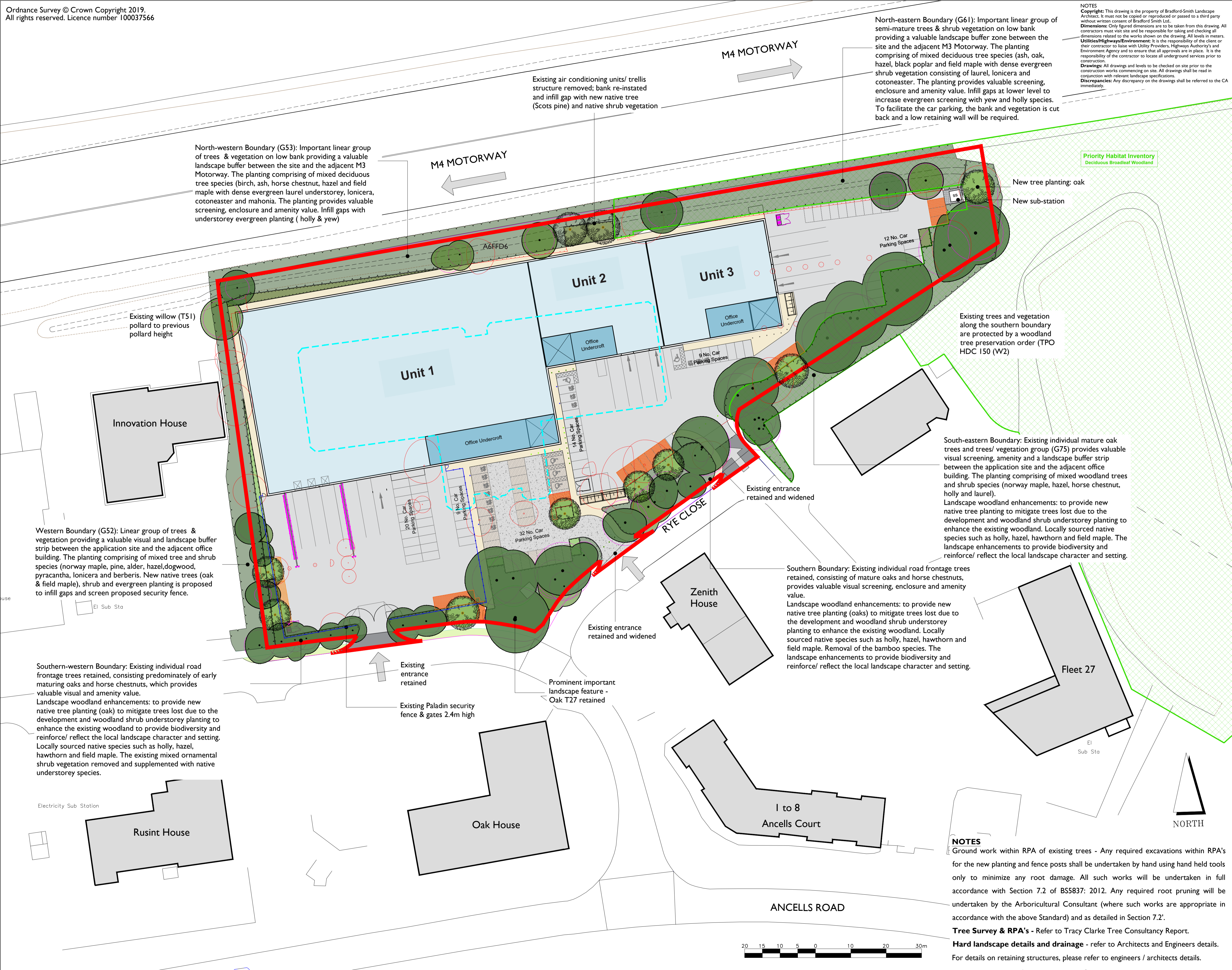
CAUDWELL

umc architects

Newark Beacon Innovation Centre, Cafferata Way, Newark, Nottinghamshire NG24 2TN
 t: +44 (0)1636 653027 f: +44 (0)1636 653010 e: info@umcarchitects.com

Drawing Status:	Planning
Drawn / Checked:	LAH / MT
Date:	26.11.19
Scale:	1:500 @ A1
Drawing no:	Revision:
19203 P0005	F

PLANNING



North-western Boundary (G53): Important linear group of trees & vegetation on low bank providing a valuable landscape buffer between the site and the adjacent M3 Motorway. The planting comprising of mixed deciduous tree species (birch, ash, horse chestnut, hazel and field maple with dense evergreen laurel understorey, lonicera, cotoneaster and mahonia. The planting provides valuable screening, enclosure and amenity value. Infill gaps with understorey evergreen planting (holly & yew)

North-eastern Boundary (G61): Important linear group of semi-mature trees & shrub vegetation on low bank providing a valuable landscape buffer zone between the site and the adjacent M3 Motorway. The planting comprising of mixed deciduous tree species (ash, oak, hazel, black poplar and field maple with dense evergreen shrub vegetation consisting of laurel, lonicera and cotoneaster. The planting provides valuable screening, enclosure and amenity value. Infill gaps at lower level to increase evergreen screening with yew and holly species. To facilitate the car parking, the bank and vegetation is cut back and a low retaining wall will be required.

Existing willow (T51) pollard to previous pollard height

Western Boundary (G52): Linear group of trees & vegetation providing a valuable visual and landscape buffer strip between the application site and the adjacent office building. The planting comprising of mixed tree and shrub species (norway maple, pine, alder, hazel, dogwood, pyracantha, lonicera and berberis. New native trees (oak & field maple), shrub and evergreen planting is proposed to infill gaps and screen proposed security fence.

Southern-western Boundary: Existing individual road frontage trees retained, consisting predominately of early maturing oaks and horse chestnuts, which provides valuable visual and amenity value. Landscape woodland enhancements: to provide new native tree planting (oak) to mitigate trees lost due to the development and woodland shrub understorey planting to enhance the existing woodland to provide biodiversity and reinforce/ reflect the local landscape character and setting. Locally sourced native species such as holly, hazel, hawthorn and field maple. The existing mixed ornamental shrub vegetation removed and supplemented with native understorey species.

Existing air conditioning units/ trellis structure removed; bank re-instated and infill gap with new native tree (Scots pine) and native shrub vegetation

Existing trees and vegetation along the southern boundary are protected by a woodland tree preservation order (TPO HDC 150 (W2))

South-eastern Boundary: Existing individual mature oak trees and trees/ vegetation group (G75) provides valuable visual screening, amenity and a landscape buffer strip between the application site and the adjacent office building. The planting comprising of mixed woodland trees and shrub species (norway maple, hazel, horse chestnut, holly and laurel). Landscape woodland enhancements: to provide new native tree planting to mitigate trees lost due to the development and woodland shrub understorey planting to enhance the existing woodland. Locally sourced native species such as holly, hazel, hawthorn and field maple. The landscape enhancements to provide biodiversity and reinforce/ reflect the local landscape character and setting.

Southern Boundary: Existing individual road frontage trees retained, consisting of mature oaks and horse chestnuts, provides valuable visual screening, enclosure and amenity value. Landscape woodland enhancements: to provide new native tree planting (oaks) to mitigate trees lost due to the development and woodland shrub understorey planting to enhance the existing woodland. Locally sourced native species such as holly, hazel, hawthorn and field maple. Removal of the bamboo species. The landscape enhancements to provide biodiversity and reinforce/ reflect the local landscape character and setting.

NOTES
Copyright: This drawing is the property of Bradford-Smith Landscape Architect. It must not be copied or reproduced or passed to a third party without written consent of Bradford-Smith Ltd.
Dimensions: Only figured dimensions are to be taken from this drawing. All contractors must visit site and be responsible for taking and checking all dimensions related to the works shown on the drawing. All levels in meters.
Utilities/Highways/Environment: It is the responsibility of the client or their contractor to liaise with Utility Providers, Highway's Authority's and Environment Agency and to ensure that all approvals are in place. It is the responsibility of the contractor to locate all underground services prior to construction.
Drawings: All drawings and levels to be checked on site prior to the construction works commencing on site. All drawings shall be read in conjunction with relevant landscape specifications.
Discrepancies: Any discrepancy on the drawings shall be referred to the CA immediately.

LEGEND

SOFT LANDSCAPE WORKS

- Existing individual trees (Grade A & B category) retained & protected - refer to Tracy Clarke Tree Consultancy drawings & reports
- Existing individual trees groups (Grade C category) retained & protected - refer to Tracy Clarke Tree Consultancy drawings & reports
- Existing individual trees to be removed for development and / or Grade U category - refer to Tracy Clarke Tree Consultancy drawings/reports
- Existing linear tree groups (Grade B & C category) retained & protected - refer to Tracy Clarke Tree Consultancy drawings & reports
- Existing Copse - Priority Habitat Inventory - Deciduous Broadleaf Woodland
- New Tree Planting - native species
- New native shrub planting
- New ornamental structure shrub planting
- Existing grass road verge retained
- Soil Cells - underground structural soil cells to increase soil volumes to facilitate replacement tree planting for the long term future

HARD LANDSCAPE WORKS

- Permeable Surface - Macadam Surface - refer to architects/ engineers drawings
- Service Yard - Concrete Surface - refer to architects/ engineers drawings
- Footpaths - Marshall Block Paving refer to architects/ engineers drawings
- Car Parking Bays - Permeable Block Paving refer to architects/ engineers drawings
- Existing building to be demolished
- Additional Car Parking Bays - For B1/B2 Use refer to architects drawings
- Security Fence & Gates - refer to Architects Plan
- Site Boundary

NOTES:
ROOT PROTECTION AREAS (RPA): New hard surfacing within the RPA shall be undertaken by a 'No-Dig' construction methods and permeable surface treatment. Refer to Tracy Clarke AMS Report & Engineers drawing

PLANNING

B 26-10-2021 Amendments to layout in accordance with Architects site plan A 18-12-2019 Fencing & surface material added.
Date Name
Revisions

BRADFORD-SMITH
LANDSCAPE ARCHITECT

5 THOROLD ROAD
FARNHAM
SURREY
GU9 7JY

TEL & FAX 01252 714607
EMAIL: mo@bradfordsmith.co.uk

Project
Guidon House, Ancells Business Park, Fleet,
GU51 2QP
Client

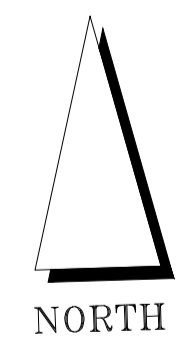
CAUDWELL
Drawing Title
**ILLUSTRATED LANDSCAPE STRATEGY
PROPOSALS PLAN**

Scale	Date	Drawn
1 : 500 @ A1	December 2019	MS

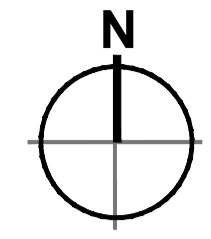
Drawing No.	Status	Revision
773-LA-P-01	PLANNING	B

<input type="checkbox"/> Preliminary	<input type="checkbox"/> Issued for Design/Information
<input type="checkbox"/> Issued for Planning Approval	<input type="checkbox"/> Issued for Tender
<input type="checkbox"/> Issued for Construction	<input type="checkbox"/> As Built

NOTES
Ground work within RPA of existing trees - Any required excavations within RPA's for the new planting and fence posts shall be undertaken by hand using hand held tools only to minimize any root damage. All such works will be undertaken in full accordance with Section 7.2 of BS5837: 2012. Any required root pruning will be undertaken by the Arboricultural Consultant (where such works are appropriate in accordance with the above Standard) and as detailed in Section 7.2'.
Tree Survey & RPA's - Refer to Tracy Clarke Tree Consultancy Report.
Hard landscape details and drainage - refer to Architects and Engineers details. For details on retaining structures, please refer to engineers / architects details.



- Dimensions are in millimeters, unless stated otherwise.
 - Scaling of this drawing is not recommended.
 - It is the recipient's responsibility to print this document to the correct scale.
 - All relevant drawings and specifications should be read in conjunction with this drawing.



C	Drawing updated to suit 40 meter arrangement.	LAH	MT	19.10.21
B	Drawing Notes Clarified.	LAH	AJL	07.01.19
A	Initial Issue	LAH	AJL	29.11.19
rev	amendments	by	ckd	date

Industrial Scheme, Fleet
 Building Plan

PLANNING

CAUDWELL



Newark Beacon Innovation Centre, Cafersta Way, Newark, Nottinghamshire NG24 2TN
 t: +44 (0)1636 653027 f: +44 (0)1636 653010 e: info@umcarchitects.com

Drawing Status:	Planning
Drawn / Checked:	MT / AJL
Date:	29.11.21
Scale:	1:200 @ 1
Drawing no:	Revision:
19203 P1001	C



- Dimensions are in millimeters, unless stated otherwise.
 - Scaling of this drawing is not recommended.
 - It is the recipient's responsibility to print this document to the correct scale.
 - All relevant drawings and specifications should be read in conjunction with this drawing.

0.7mm thick galvalloy coated parapet flashing.
 Finish: Tata Colorcoat HPS200 Ultra
 Colour: Goosewing Grey (RAL 7038)

0.7mm thick CA 32 1000W trapezoidal profiled single sheet cladding to the inside of the parapet.
 Finish: Tata Colorcoat HPS200 Ultra
 Colour: Goosewing Grey (RAL 7038) with matching flashing to roof.

Void between gutter and wall to be insulated with rigid board insulation and Afasbond FR canister applied insulation to fill gaps as required & air sealed with internal closer flashing with 100mm overlap at joints.

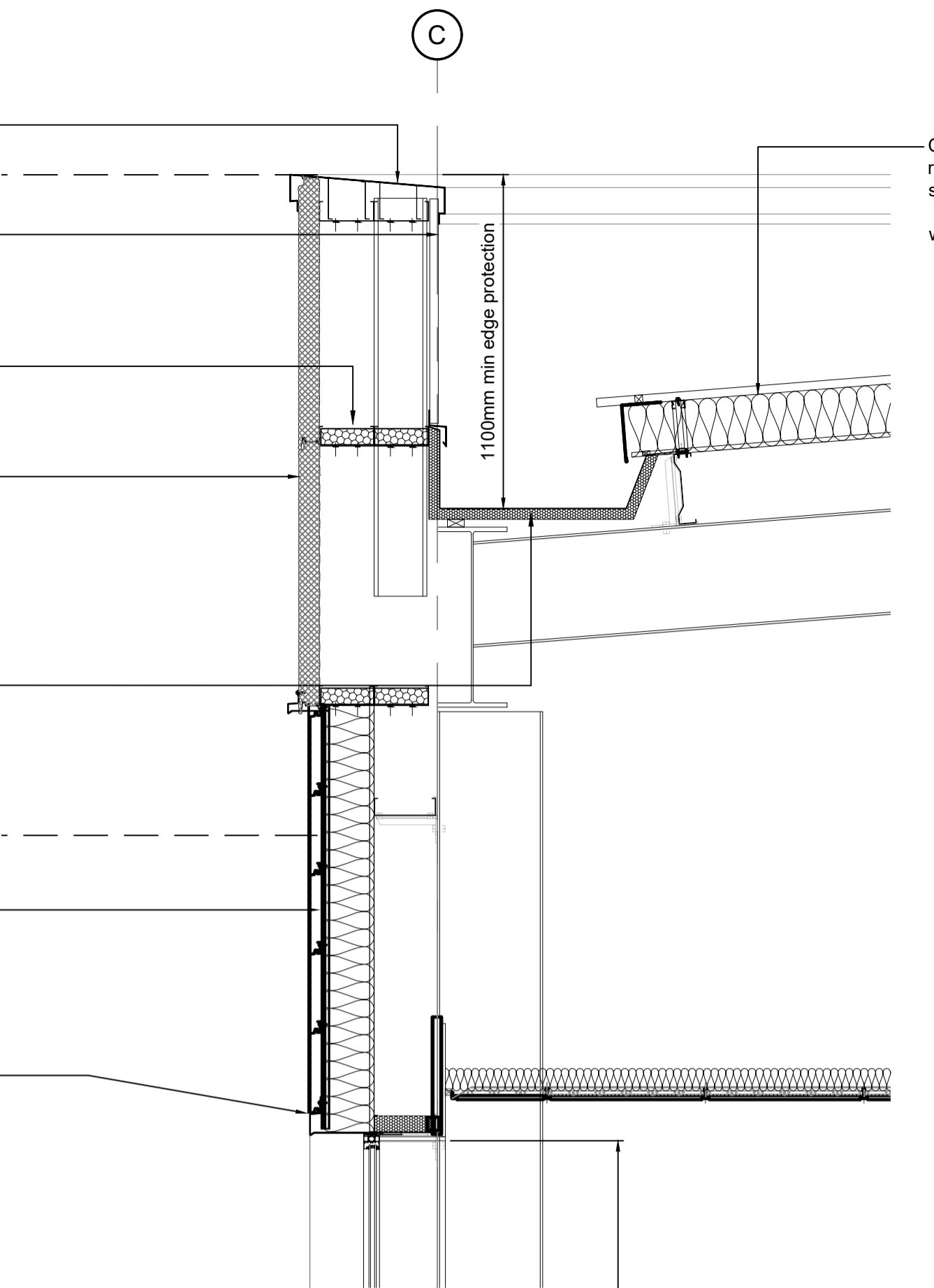
Horizontally laid composite micro-rib profiled panels to achieve a minimum performance 'U' value to meet the Part L model & 25 years system guarantee.
 Colour: Anthracite (RAL 7016)

Allowance for double cladding rails/ additional steel in order for face of microrib panel to extend beyond trapezoidal built up system.

Cascade Premier membrane lined gutters (single skin or insulated depending on location). Eaves gutter material will be a minimum 1.2mm thick nominal pre-galvanised steel, complete with 1.2mm PVC pre-laminated membrane with Rockwool LPCB approved insulation core. Internal lining finish to be bright white 901 (similar approved)
 To be linked to a siphonic system to main roof to specialist design.

Horizontally laid micro-rib profiled panels to achieve a minimum performance 'U' value to meet the Part L model & 25 years system guarantee. CA twin therm 300MR (microrib)
 Colour: White (RAL 9003)

0.7mm thick galvalloy coated head flashing to be insulated with 60mm thick board insulation with Afasbond FR canister applied insulation to any gaps to be fixed to the base of the PFC and enclosed with 0.7mm thick white galvalloy enamel coated internal closer flashing, & air sealed with internal closer flashing.
 Finish: Tata Colorcoat HPS200 Ultra
 Colour: to match adjacent cladding



Detail C Scale 1:20

0.7mm thick galvalloy coated cill flashing to be insulated & air sealed with internal closer flashing with 5° slope
 Finish: Tata Colorcoat HPS200 Ultra
 Colour: to match adjacent cladding

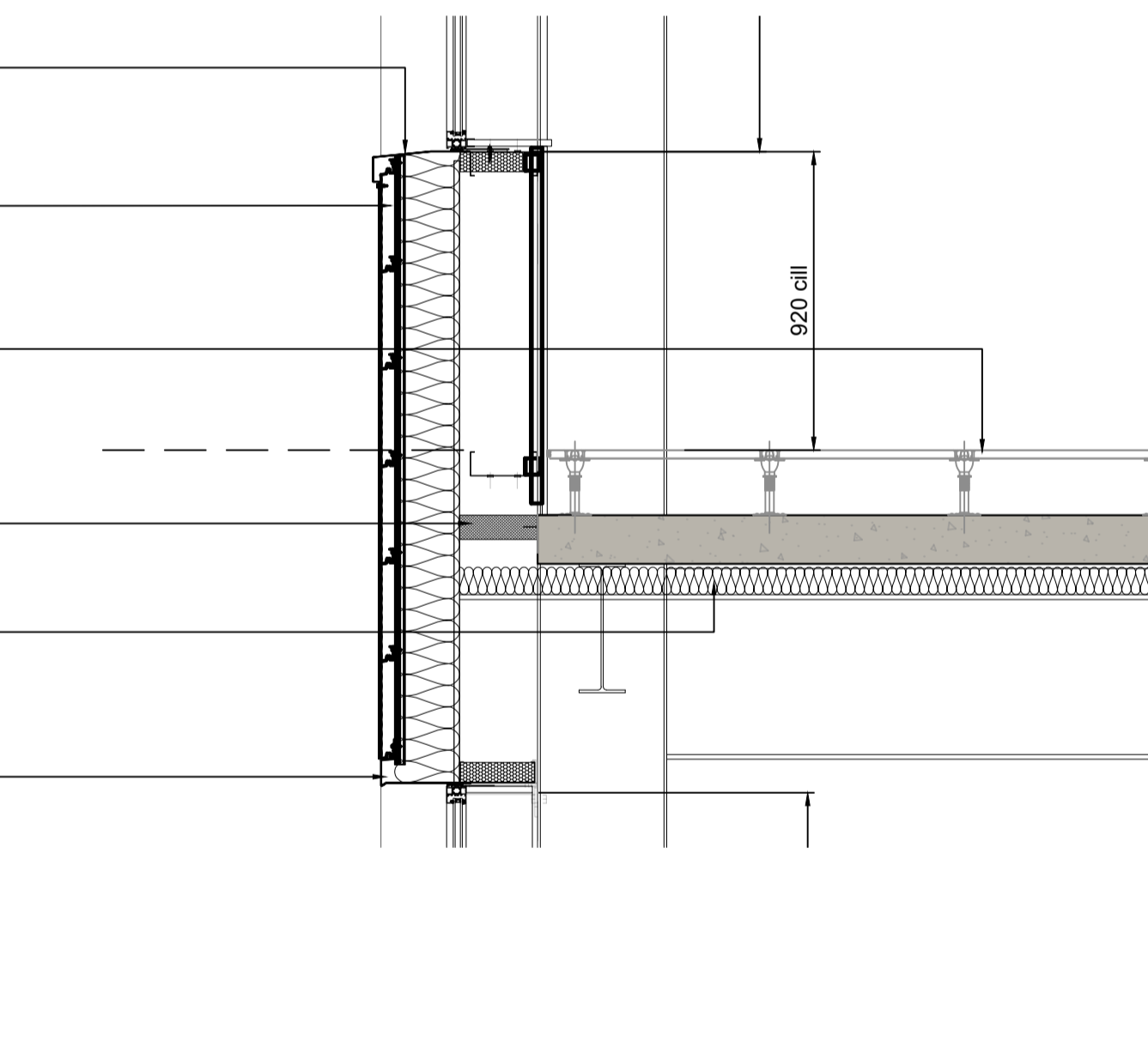
Horizontally laid micro-rib profiled panels to achieve a minimum performance 'U' value to meet the Part L model & 25 years system guarantee. CA twin therm 300MR (microrib)
 Colour: White (RAL 9003)

1st floor slab to consist of the following floor build up:
 Composite insitu concrete slab on permanent steel formwork in accordance with Structural engineers details. Office area to receive Kingspan RMC600 or similar access floor on a 600 x 600 grid providing a minimum of 150mm clear void.

75mm Rockwool SP Firestop slab to achieve 60 minute fire rating as per manufacturers recommendations and details

Underside structural deck at undercroft to be insulated to achieve minimum performance 'U' value for first floor office. Insulation to be of non-combustible material, with appropriate fixing method to achieve fire performance criteria in accordance with Part B.

0.7mm thick galvalloy coated head flashing to be insulated with 60mm thick board insulation with Afasbond FR canister applied insulation to any gaps to be fixed to the base of the PFC and enclosed with 0.7mm thick white galvalloy enamel coated internal closer flashing, & air sealed with internal closer flashing.
 Finish: Tata Colorcoat HPS200 Ultra
 Colour: to match adjacent cladding



Detail B Scale 1:20

Window to be Kawneer or Schuco thermally broken system comprising polyester powder coat aluminium mullions and transoms. Operable windows to equate to 1/20 of floor area of the room.
 Glazed finish: 6mm Antisun glazed outer pane (grey tint) with 12mm argon filled air gap with a 6mm clear inner pane
 Frame Colour: Anthracite (RAL 7016) White pressed metal flashing to interior undercroft.

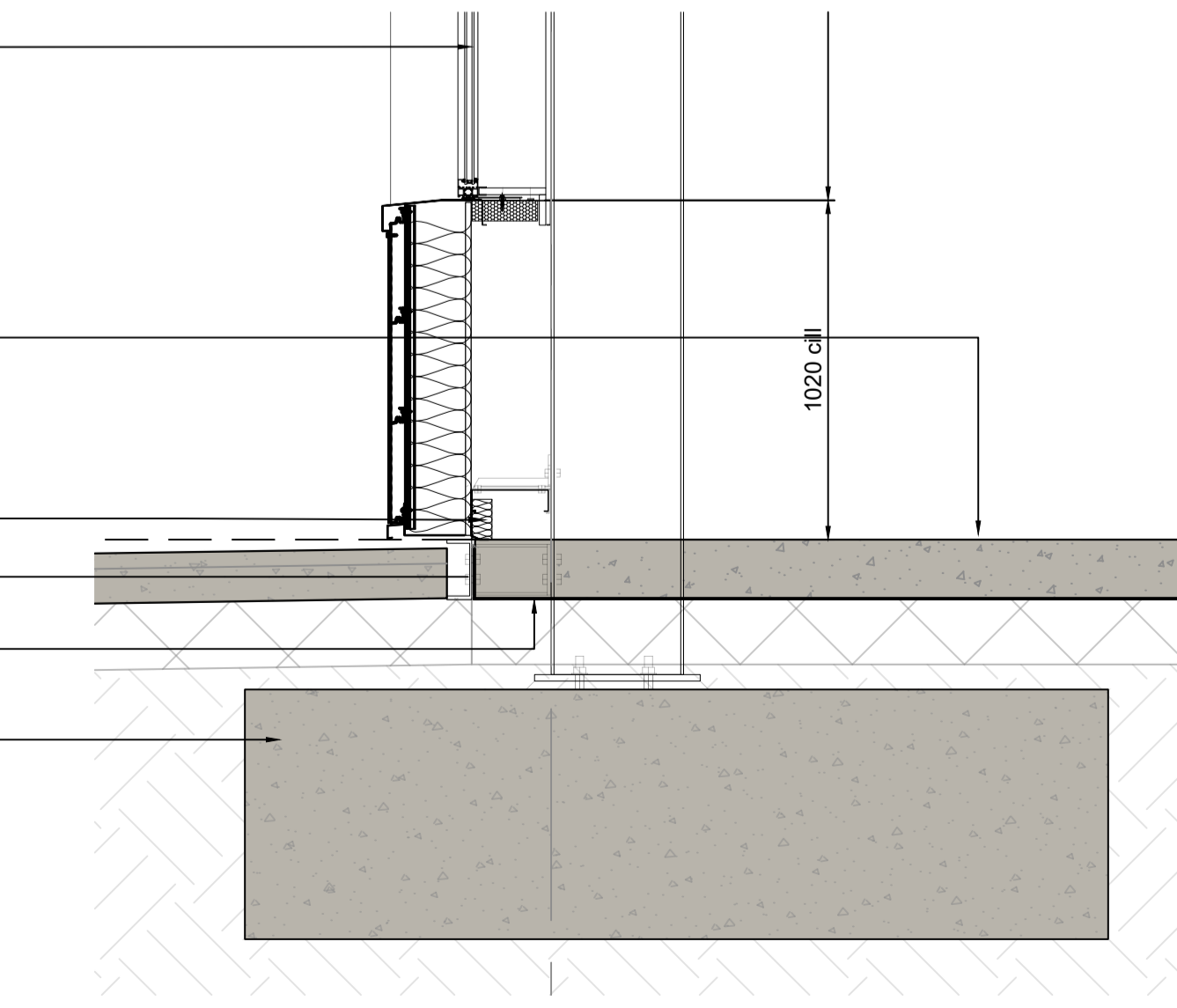
Reinforced ground floor slab with power floated finish to an FM2 standard to be designed in accordance with Structural engineers details. Floor build upto achieve a minimum performance 'U' value to meet the Part L model.

50mm edge insulation to slab to reduce cold bridging

PFC ground beam is indicative to client and main contractors preference. To structural engineers details

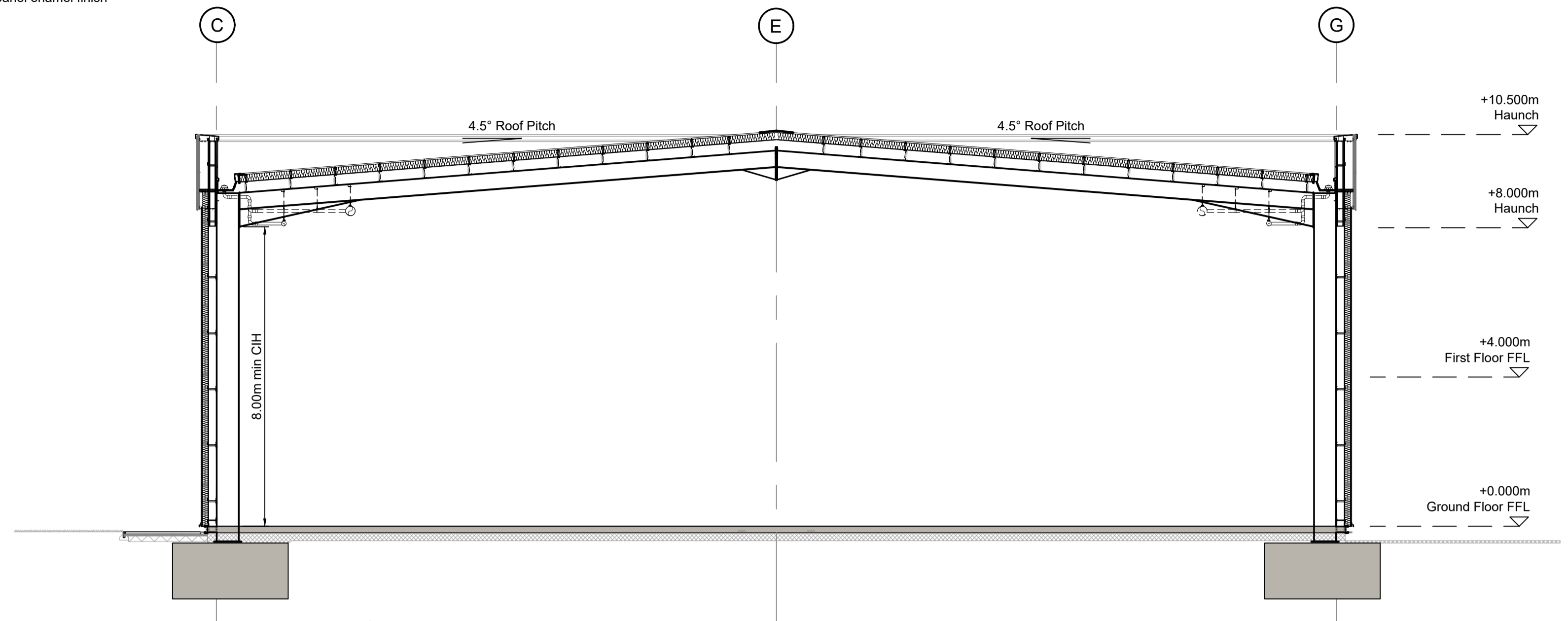
Allowance for underslab insulation to be made subject to part L model.

Foundation depth and type to be determined by structural engineer to suit ground conditions and design loadings.

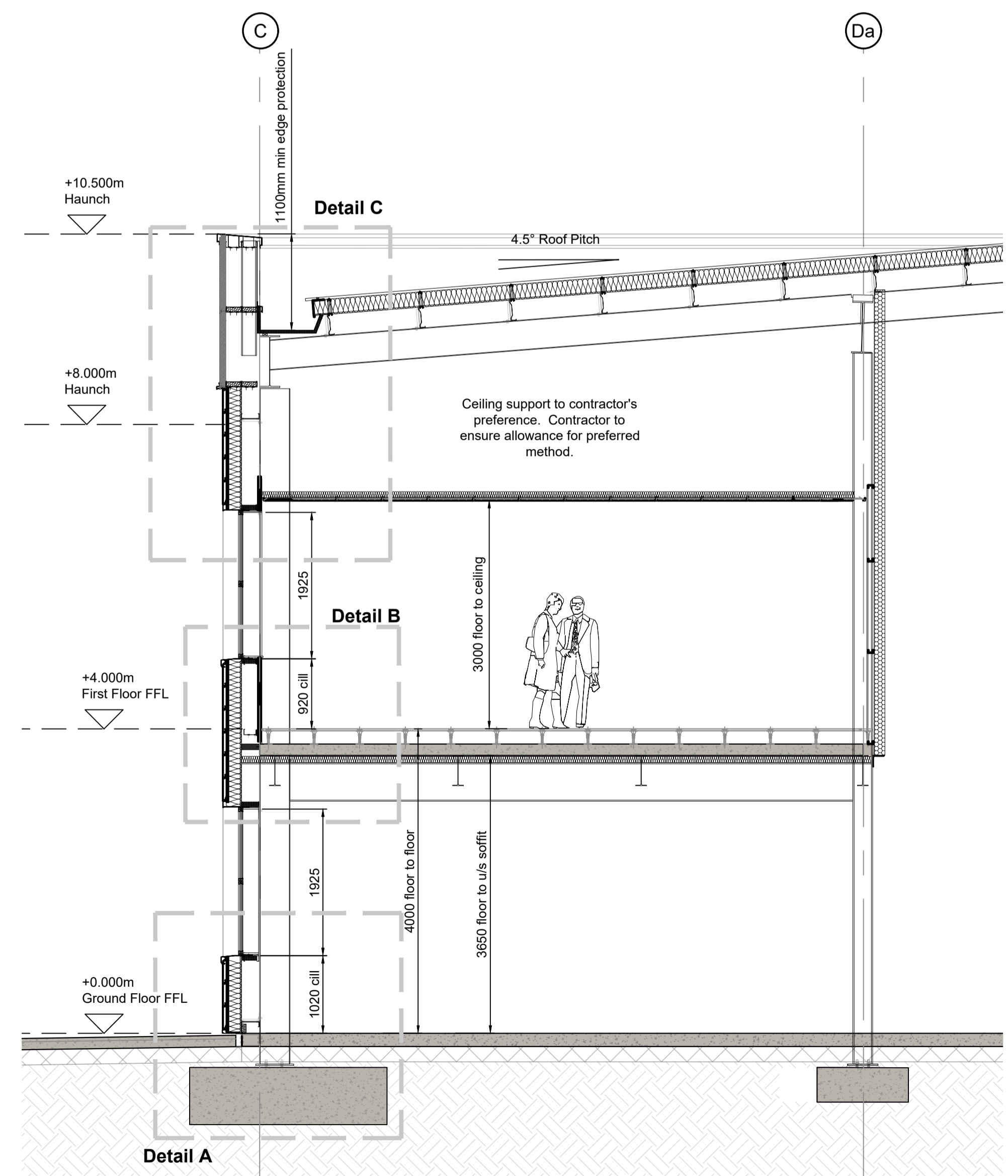


Detail A Scale 1:20

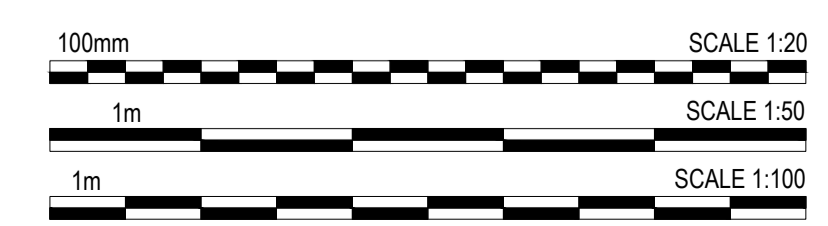
CA 32 1000R or similar twin skin trapezoidal profiled built up roof cladding to achieve a minimum performance 'U' value as stated in Part L model & 25 years system guarantee comprising:
 - 0.7mm thick CA32 1000R profiled galvanised roof sheet with Tata Colorcoat HPS200 Ultra finish.
 Colour: Goosewing Grey (RAL 7038) (Signature Colour)
 - 0.7mm thick liner panel enamel finish
 Colour: Bright White



Typical Warehouse Section
 Scale 1:100



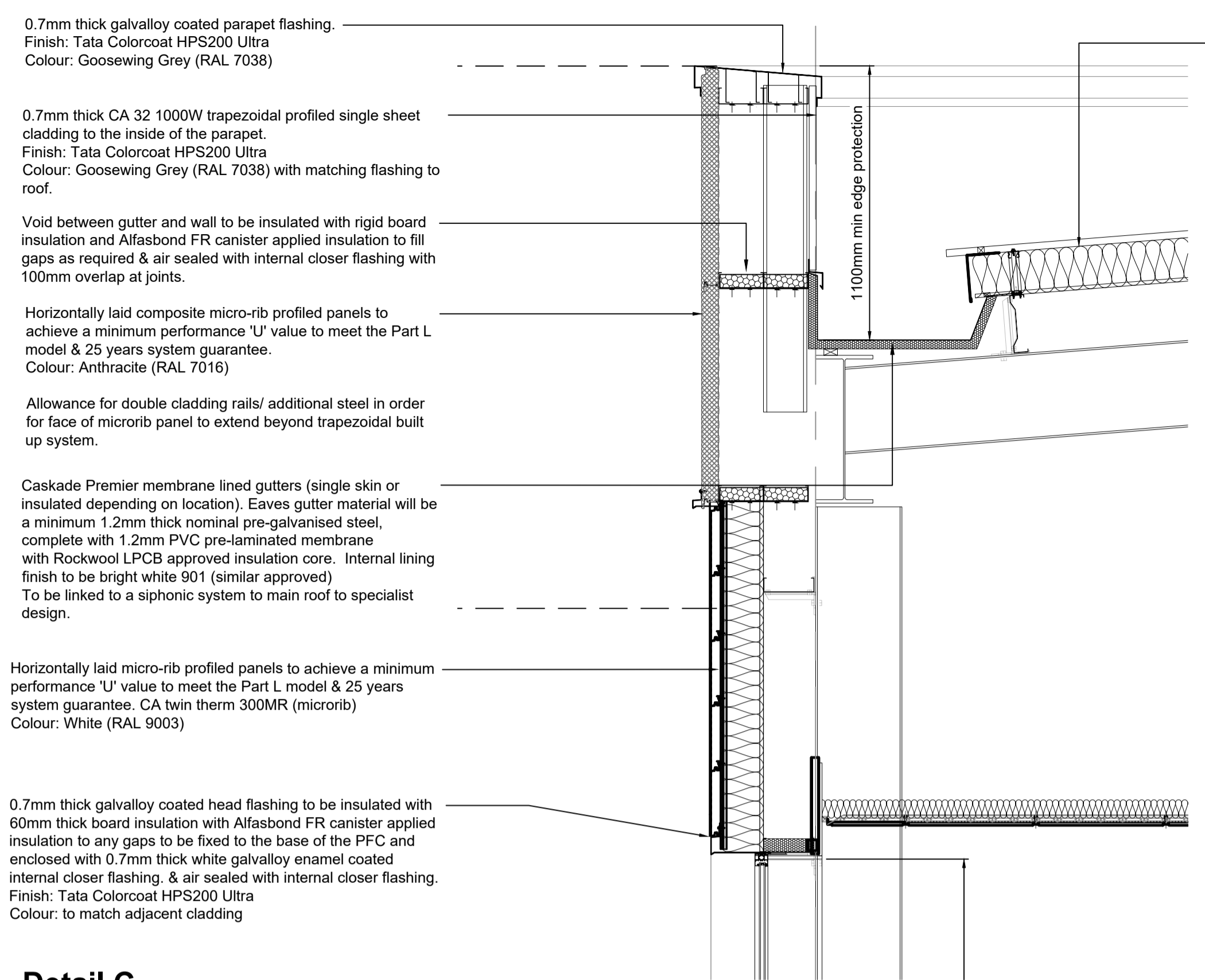
Office Section Extract
 Scale 1:50



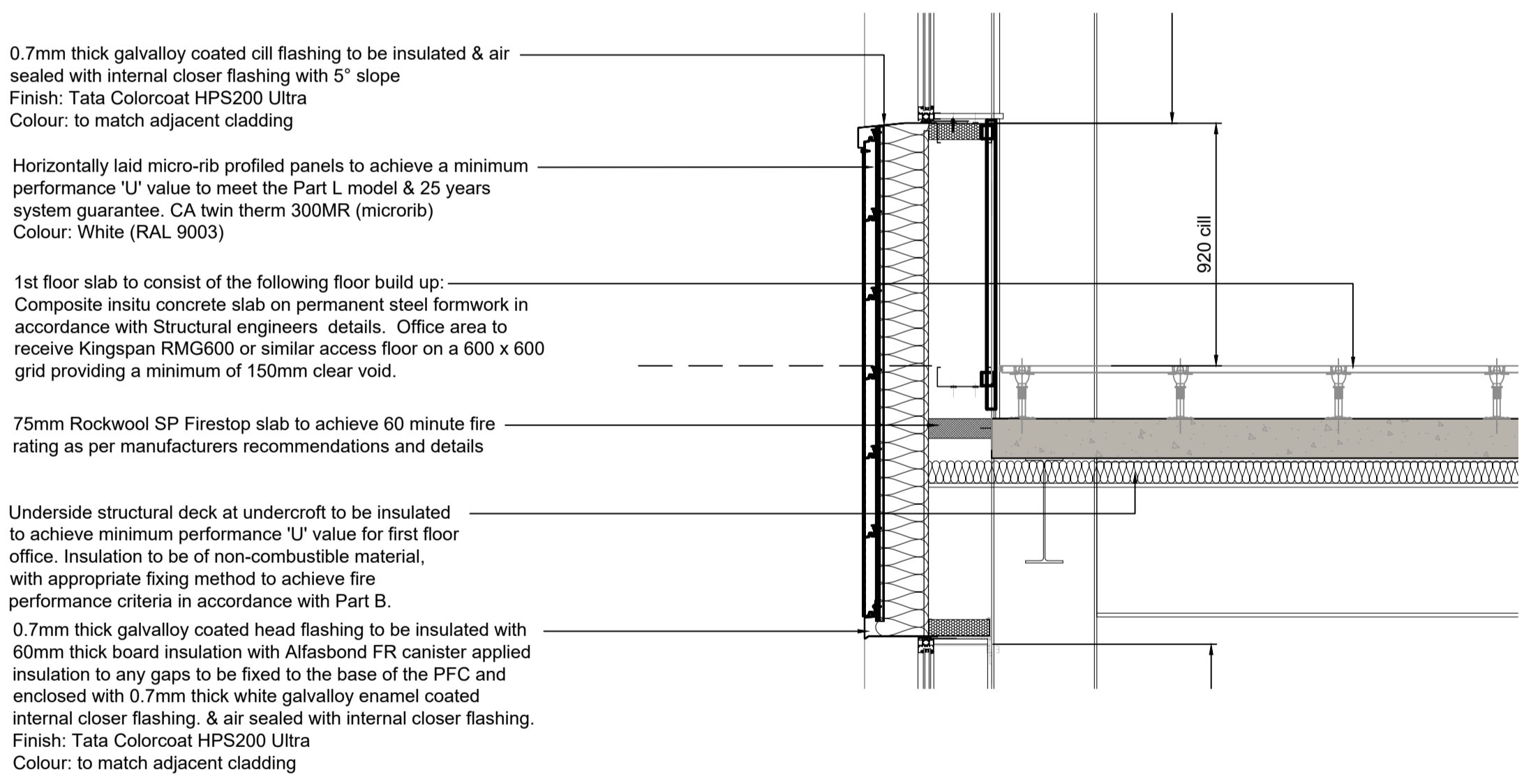
TENDER

rev	amendments	by	ckd	date
Industrial Scheme, Fleet				
Typical Sections Unit 1B				
CAUDWELL				
Newark Beacon Innovation Centre, Calfveant Way, Newark, Nottinghamshire NG24 2TN t: +44 (0)1636 653027 f: +44 (0)1636 653010 e: info@umcarchitects.com				
Drawing Status:	Tender			
Drawn / Checked:	MT / AIL			
Date:	27/05/2021			
Scale:	As noted @ 1			
Drawing no:	Revision:			
19203 T2002	A			

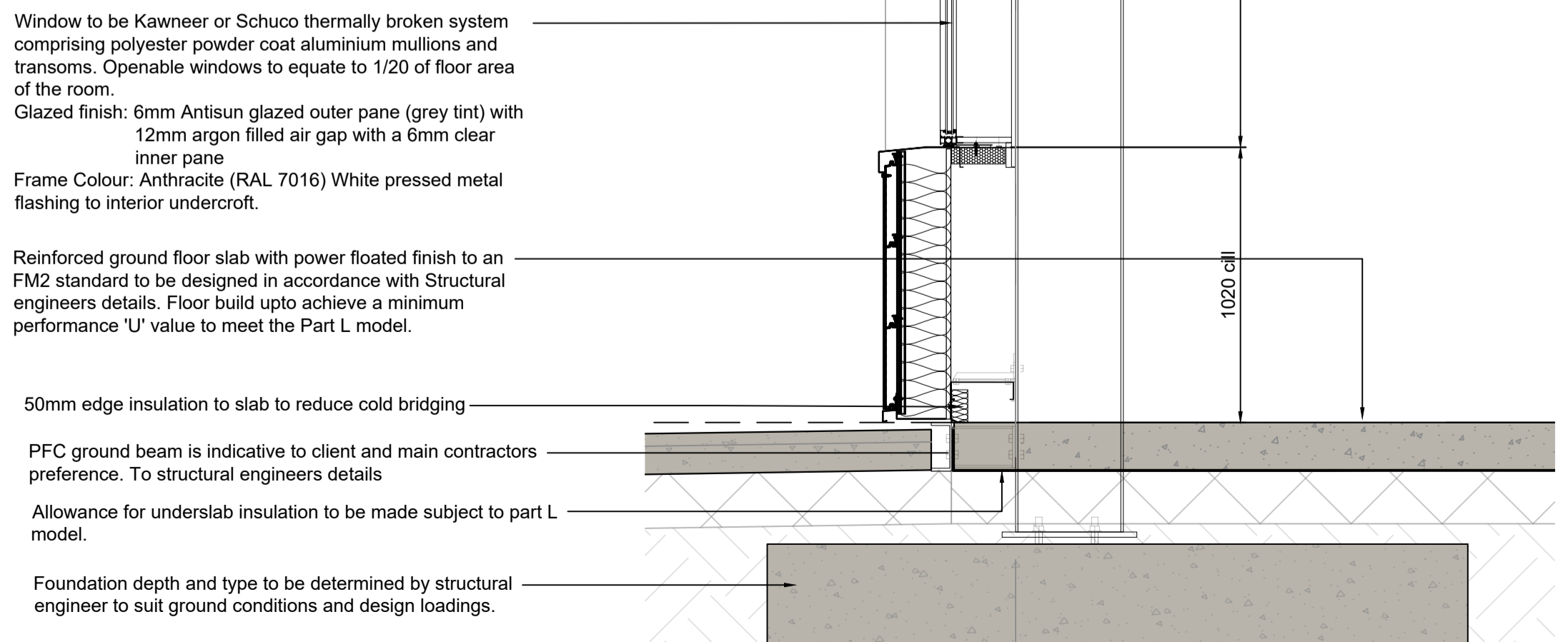
- Dimensions are in millimeters, unless stated otherwise.
 - Scaling of this drawing is not recommended.
 - It is the recipient's responsibility to print this document to the correct scale.
 - All relevant drawings and specifications should be read in conjunction with this drawing.



Detail C Scale 1:20

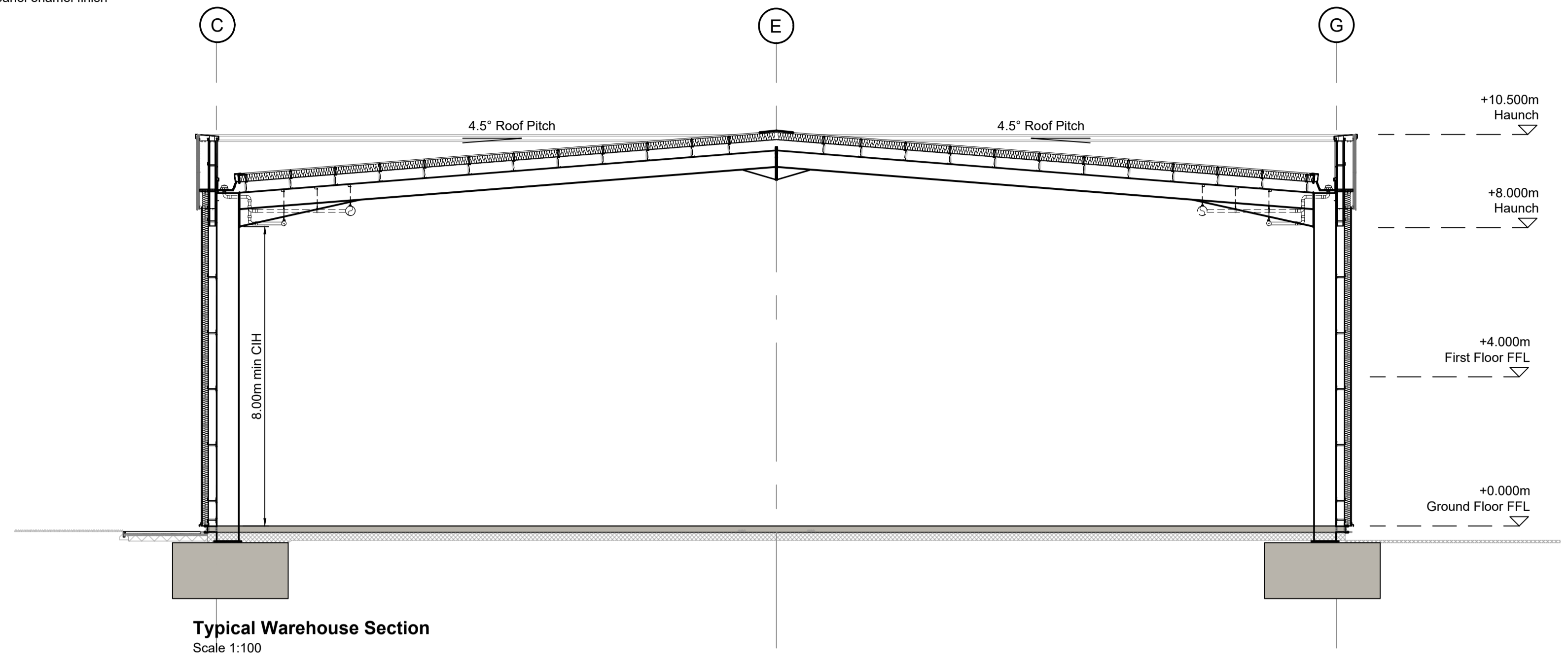


Detail B Scale 1:20

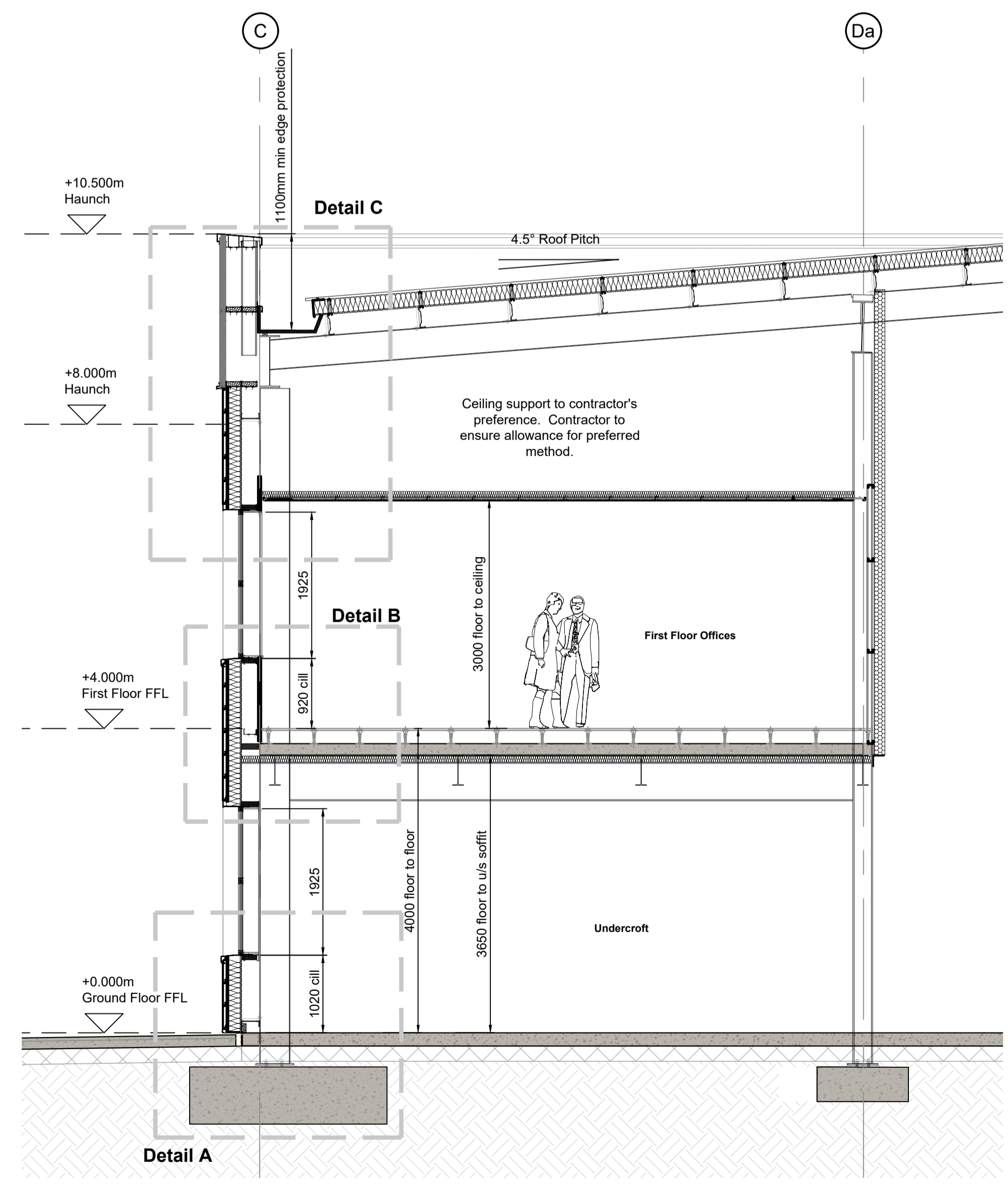


Detail A Scale 1:20

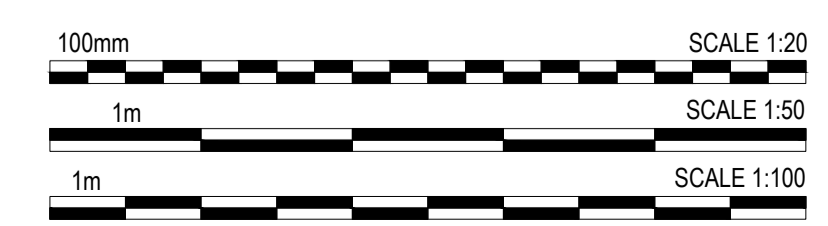
CA 32 1000R or similar twin skin trapezoidal profiled built up roof cladding to achieve a minimum performance 'U' value as stated in Part L model & 25 years system guarantee comprising:
 - 0.7mm thick CA32 1000R profiled galvanised roof sheet with Tata Colorcoat HPS200 Ultra finish.
 Colour: Goosewing Grey (RAL 7038) (Signature Colour)
 - 0.7mm thick liner panel enamel finish
 Colour: Bright White



Typical Warehouse Section
Scale 1:100



Office Section Extract
Scale 1:50



TENDER

rev	amendments	by	ckd	date

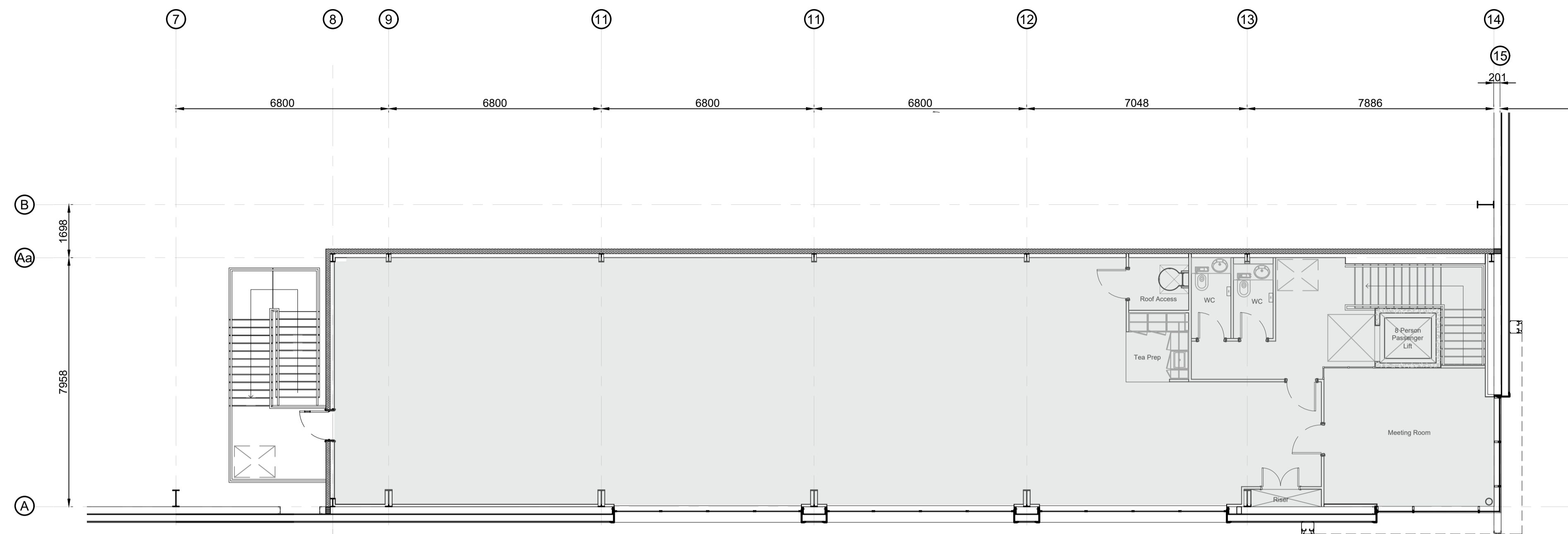
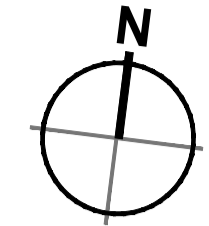
Industrial Scheme, Fleet
 Typical Sections Unit 1C

CAUDWELL

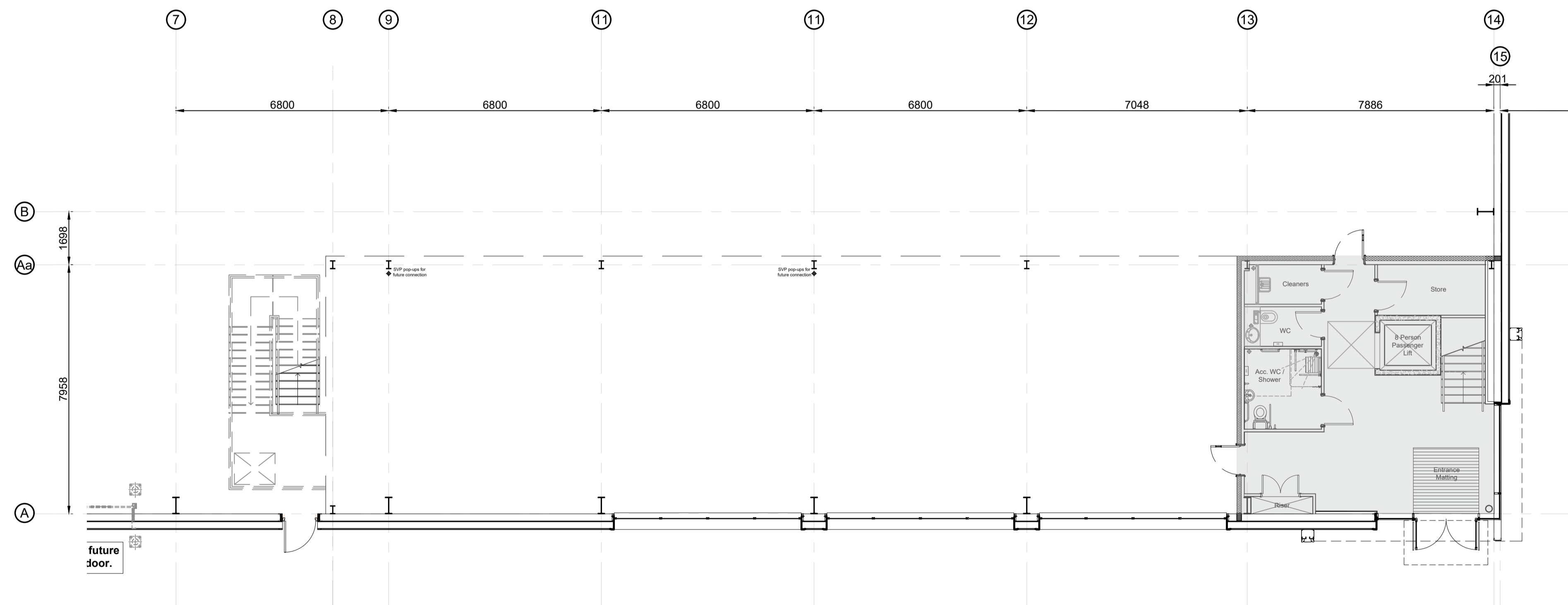


Newark Beacon Innovation Centre, Calfveasta Way, Newark, Nottinghamshire NG24 2TN
 t +44 (0)1636 653027 f +44 (0)1636 653010 e info@umcarchitects.com

Drawing Status:	Tender
Drawn / Checked:	MT / AIL
Date:	27/05/2021
Scale:	As noted @1
Revision no:	Revision:
19203 T3002	A



Unit 1 - First Floor Office
 Scale 1:100



Unit 1 - Ground Floor Office
 Scale 1:100

C	Drawing updated to suit 40 meter arrangement.	LAH	MT	19.10.21
B	Drawing Notes Clarified.	LAH	AJL	07.01.19
A	Initial Issue	LAH	AJL	29.11.19
rev	amendments	by	ckd	date

Industrial Scheme, Fleet
 Unit 1 - Office Plans

PLANNING

CAUDWELL

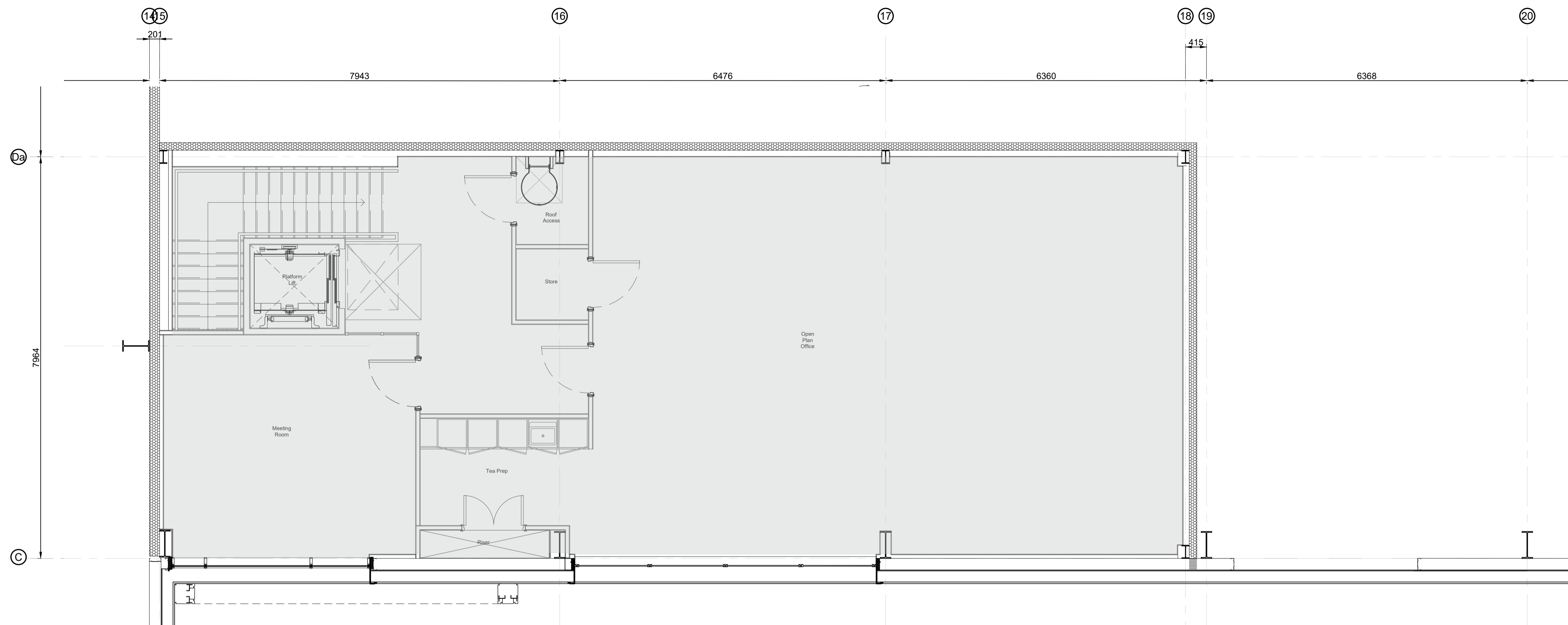
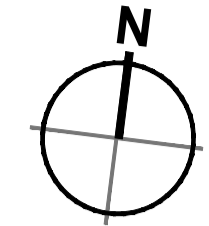


Newark Beacon Innovation Centre, Cafferata Way, Newark, Nottinghamshire NG24 2TN
 t: +44 (0)1636 653027 f: +44 (0)1636 653010 e: info@umcarchitects.com

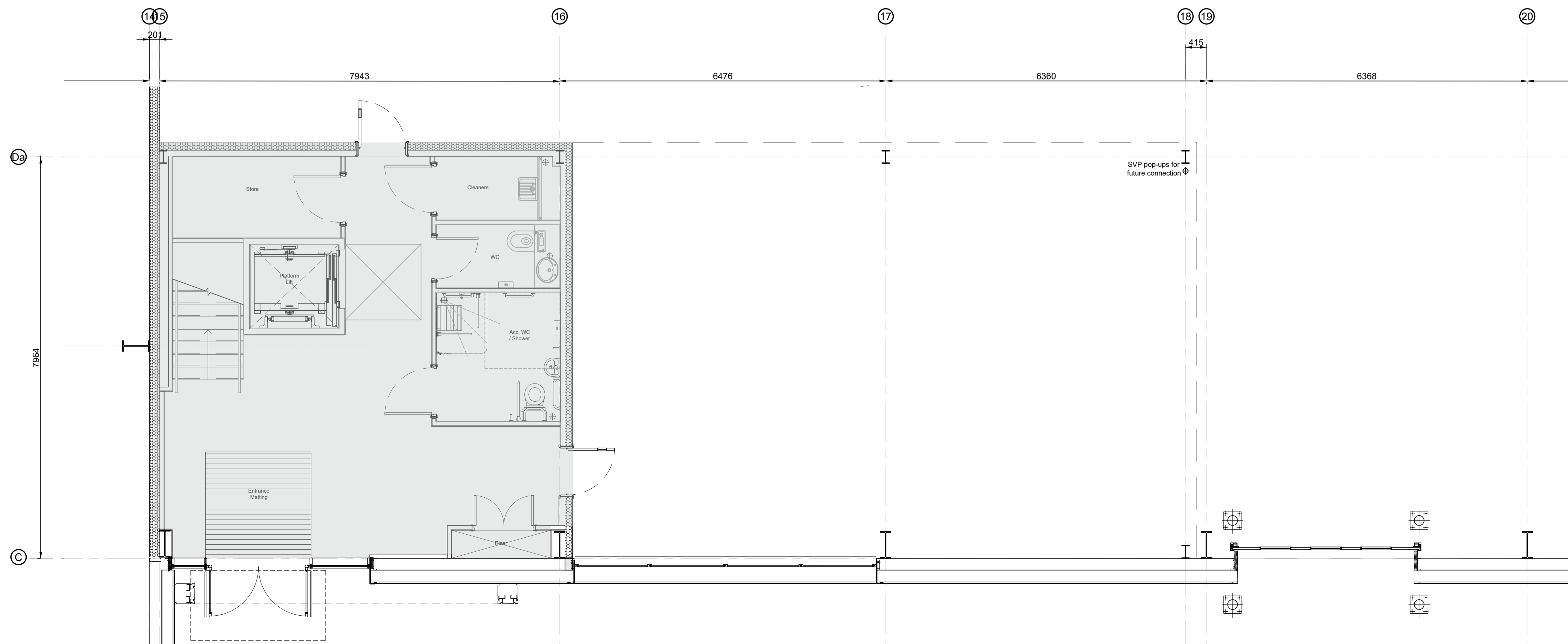
Drawing Status:	Planning
Drawn / Checked:	LAH / MT
Date:	29.11.19
Scale:	1:100 @ 1
Drawing no:	Revision:
19203 P1002	C



- Dimensions are in millimeters, unless stated otherwise.
 - Scaling of this drawing is not recommended.
 - It is the recipient's responsibility to print this document to the correct scale.
 - All relevant drawings and specifications should be read in conjunction with this drawing.



Unit 2 - First Floor Office
 Scale 1:50



Unit 2 - Ground Floor Office
 Scale 1:50

C	Drawing updated to suit 40 meter arrangement.	LAH	MT	19.10.21
B	Drawing Notes Clarified.	LAH	AJL	07.01.19
A	Initial Issue	LAH	AJL	29.11.19
rev	amendments	by	ckd	date

Industrial Scheme, Fleet

Unit 2 - Office Plans

CAUDWELL



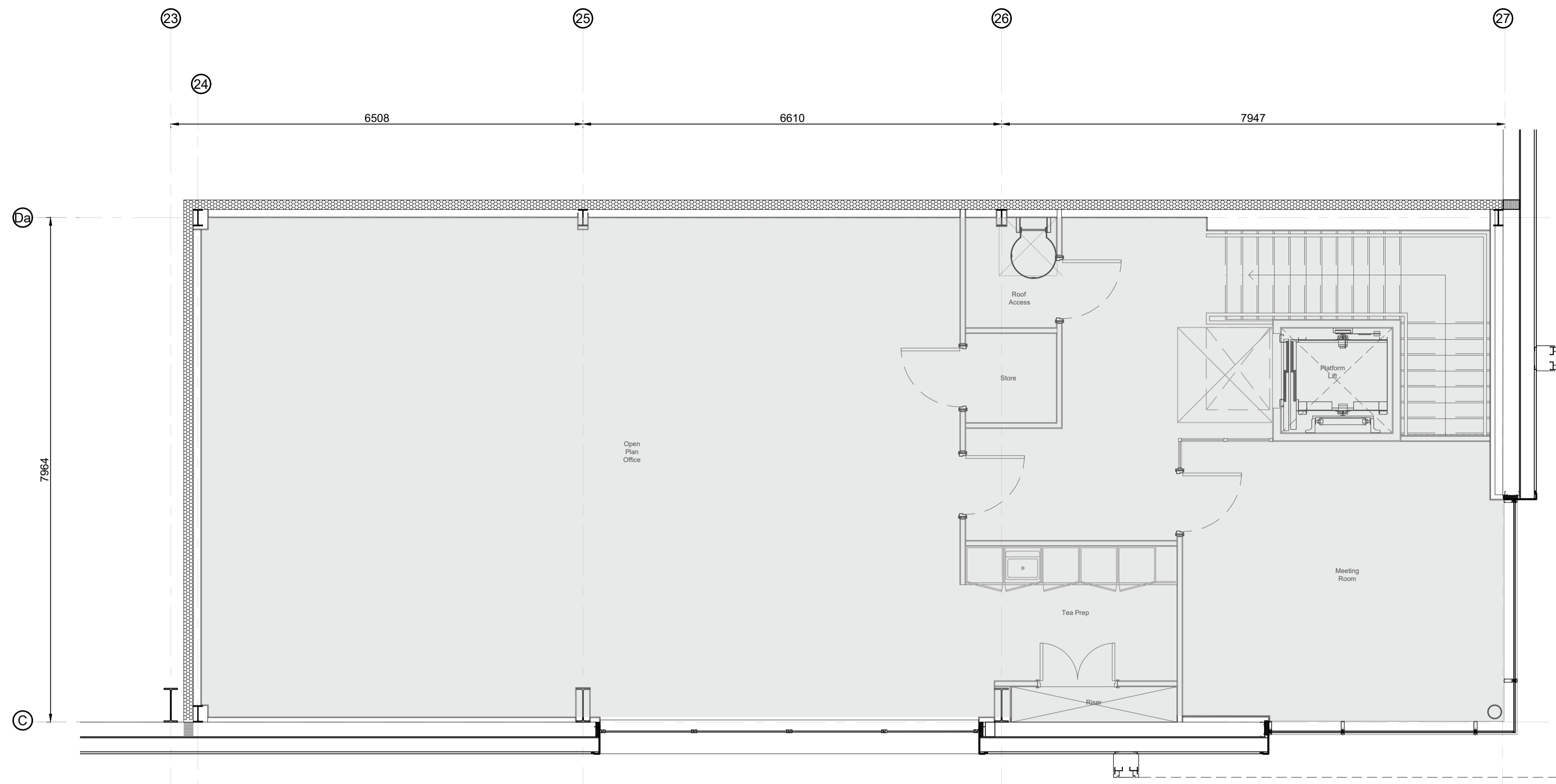
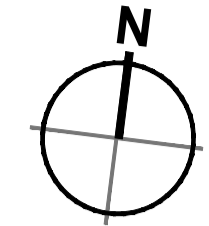
Newark Beacon Innovation Centre, Cafferata Way, Newark, Nottinghamshire NG24 2TN
 t: +44 (0)1636 653027 f: +44 (0)1636 653010 e: info@umcarchitects.com

Drawing Status:	Planning
Drawn / Checked:	MT / AJL
Date:	19.11.19
Scale:	1:50 @ 1
Drawing no:	Revision:
19203 P1003	C

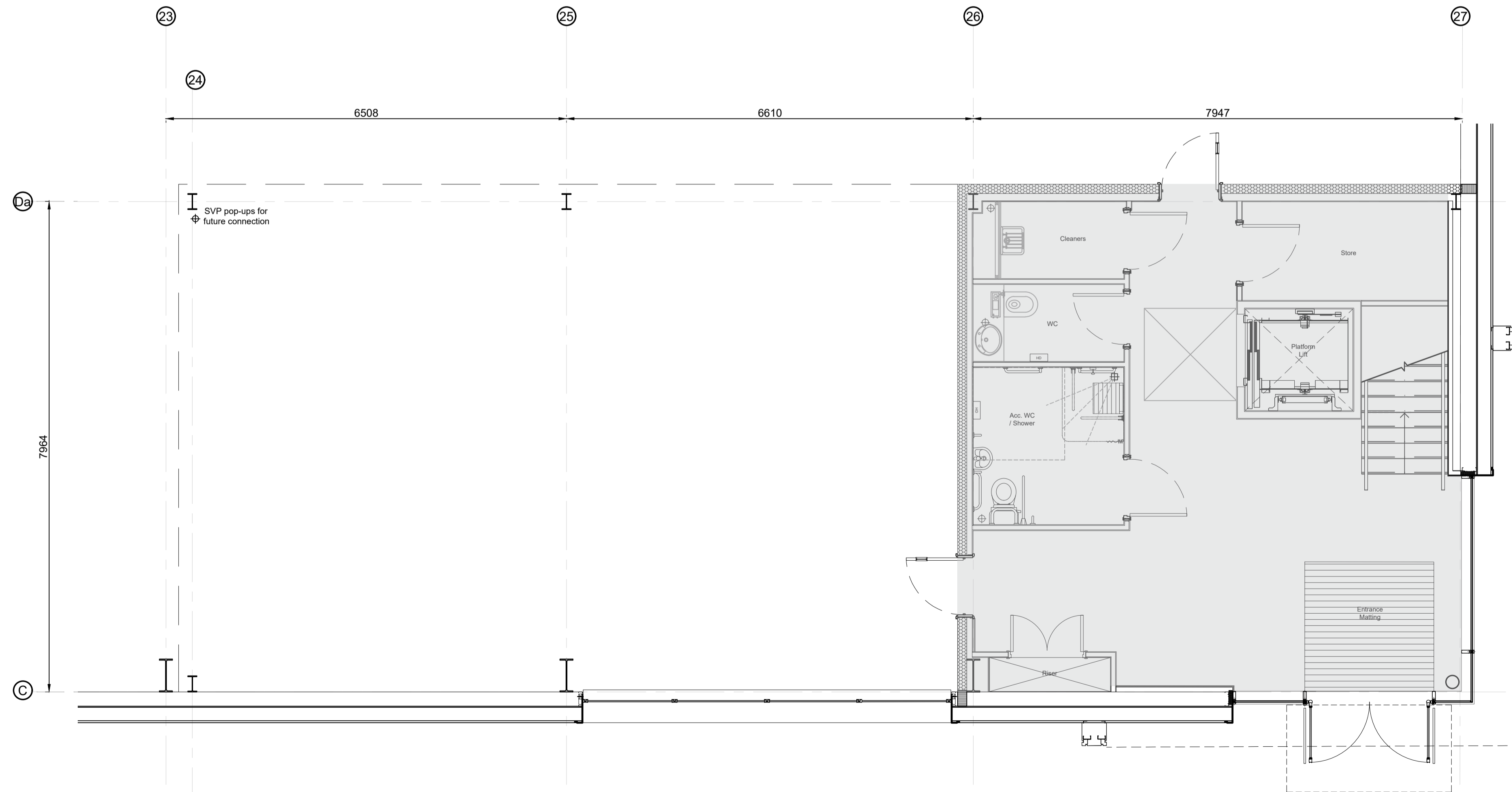
PLANNING



- Dimensions are in millimeters, unless stated otherwise.
 - Scaling of this drawing is not recommended.
 - It is the recipient's responsibility to print this document to the correct scale.
 - All relevant drawings and specifications should be read in conjunction with this drawing.



Unit 3 - First Floor Office
 Scale 1:50



Unit 3 - First Floor Office
 Scale 1:50

C	Drawing updated to suit 40 meter arrangement.	LAH	MT	19.10.21
B	Drawing Notes Clarified.	LAH	AJL	07.01.19
A	Initial Issue	LAH	AJL	29.11.19
rev	amendments	by	ckd	date

Industrial Scheme, Fleet

Unit 3 - Office Plans

CAUDWELL



Newark Beacon Innovation Centre, Cafferata Way, Newark, Nottinghamshire NG24 2TN
 t: +44 (0)1636 653027 f: +44 (0)1636 653010 e: info@umcarchitects.com

Drawing Status:	Planning
Drawn / Checked:	MT / AJL
Date:	29.11.19
Scale:	1:50 @ 1
Drawing no:	Revision:
19203 P1004	C

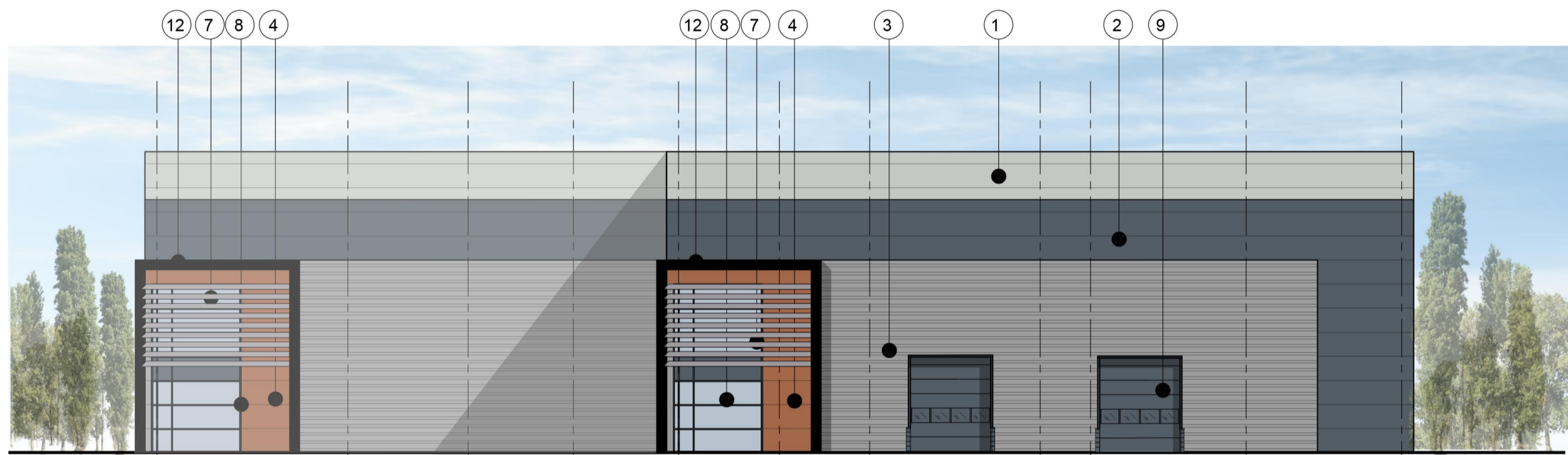
PLANNING



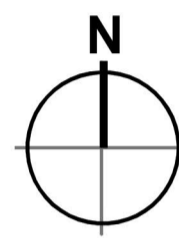
- Dimensions are in millimeters, unless stated otherwise.
 - Scaling of this drawing is not recommended.
 - It is the recipient's responsibility to print this document to the correct scale.
 - All relevant drawings and specifications should be read in conjunction with this drawing.



South Elevation
 Scale : 1:200



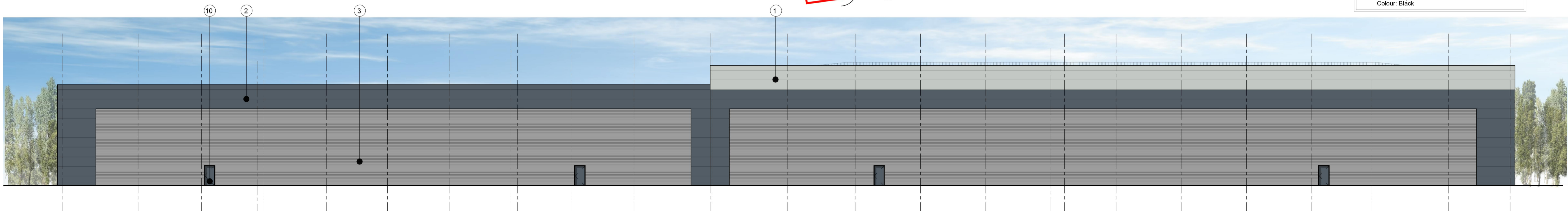
East Elevation
 Scale : 1:200



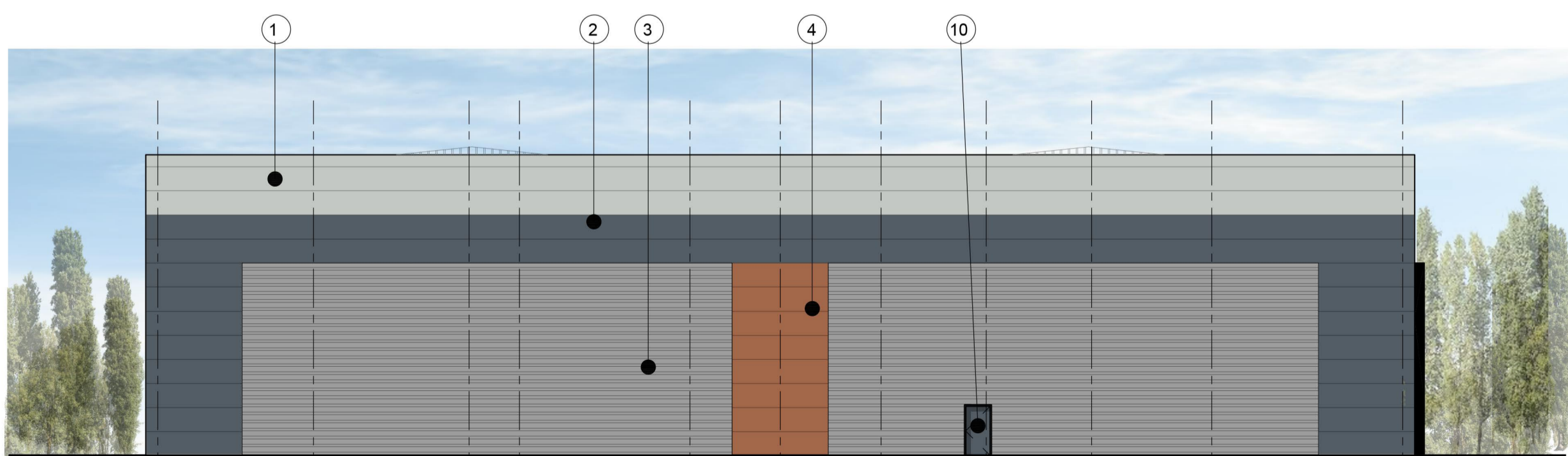
Key Plan
 Scale : 1:1000



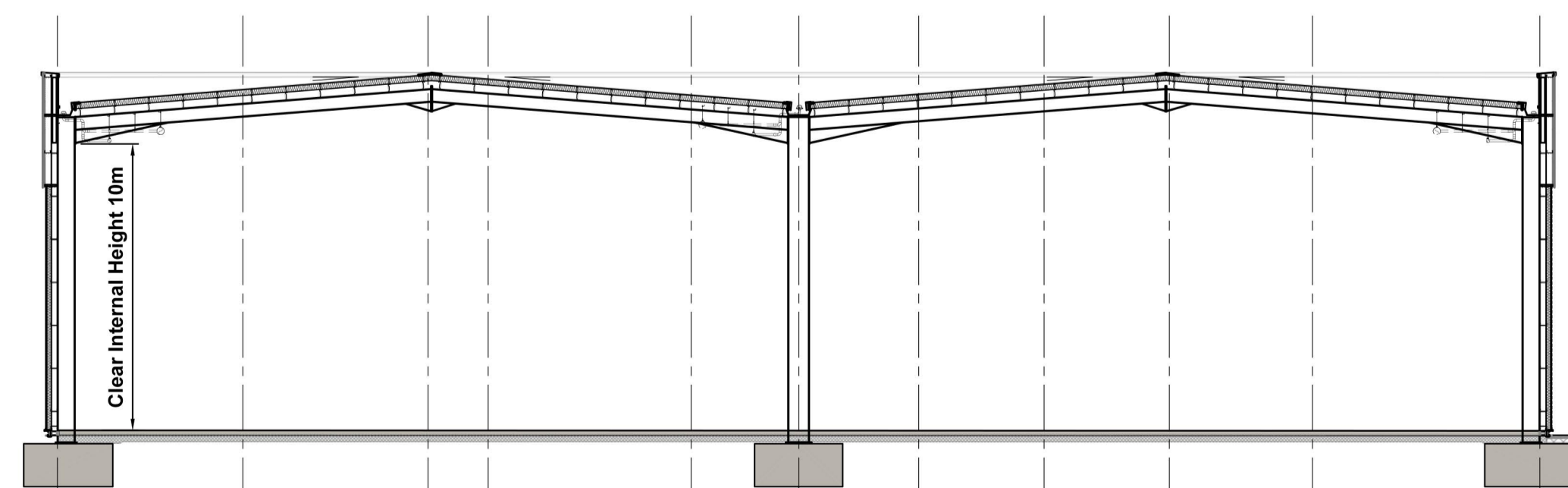
- Key**
- Horizontally laid trapezoidal wall cladding
 Finish: Tata Steel Colorcoat HPS200 Ultra
 Colour: Goosewing Grey (RAL 7038)
 - Horizontally laid micro-rib cladding
 Finish: Tata Steel Colorcoat Prisma
 Colour: Anthracite (RAL 7016)
 - Horizontally laid trapezoidal wall cladding
 Finish: Tata Steel Colorcoat HPS200 Ultra
 Colour: Pure Grey (RAL 000 55 00)
 - Horizontally laid trapezoidal built up wall cladding
 Finish: Tata Steel Colorcoat Prisma
 Colour: Seren Copper
 - Trapezoidal roof cladding
 Finish: Tata Steel Colorcoat HPS200 Ultra
 Colour: White (RAL 9003)
 - Polyester powder coated aluminium windows
 with double glazed sealed unit
 Colour: Black
 - Louvre/ Brise Soleil
 Finish: Tata Steel Colorcoat HPS200 Ultra
 Colour: White
 - Aluminium curtain walling
 Finish: Polyester Powder Coated
 Colour: Black
 - Overhead sectional doors with Level Access
 Colour: Anthracite
 - Personnel Doors
 Finish: To match adjacent cladding
 Colour: Anthracite
 - Overhead sectional doors with dock leveller
 Colour: Anthracite
 - 3.0mm Aluminium goal post feature flashing
 Finish: Polyester Powder Coated
 Colour: Black



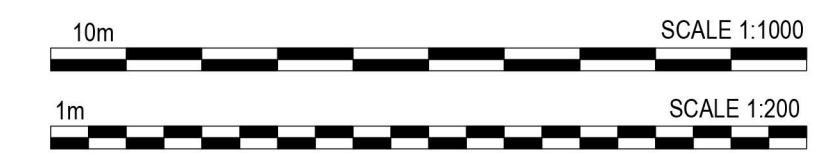
North Elevation
 Scale : 1:200



West Elevation
 Scale : 1:200



A-A Section Unit 1
 Scale : 1:200



rev	amendments	by	ckd	date
C	Drawing updated to suit 40 meter arrangement.	LAH	MT	19.10.21
B	Drawing Notes Clarified.	LAH	AJL	07.01.19
A	Initial Issue	LAH	AJL	29.11.19

Industrial Scheme, Fleet

Proposed Elevations + Section

CAUDWELL



Newark Beacon Innovation Centre, Caferston Way, Newark, Nottinghamshire NG24 2TN
 t: +44 (0)1636 653027 f: +44 (0)1636 653010 e: info@umcarchitects.com

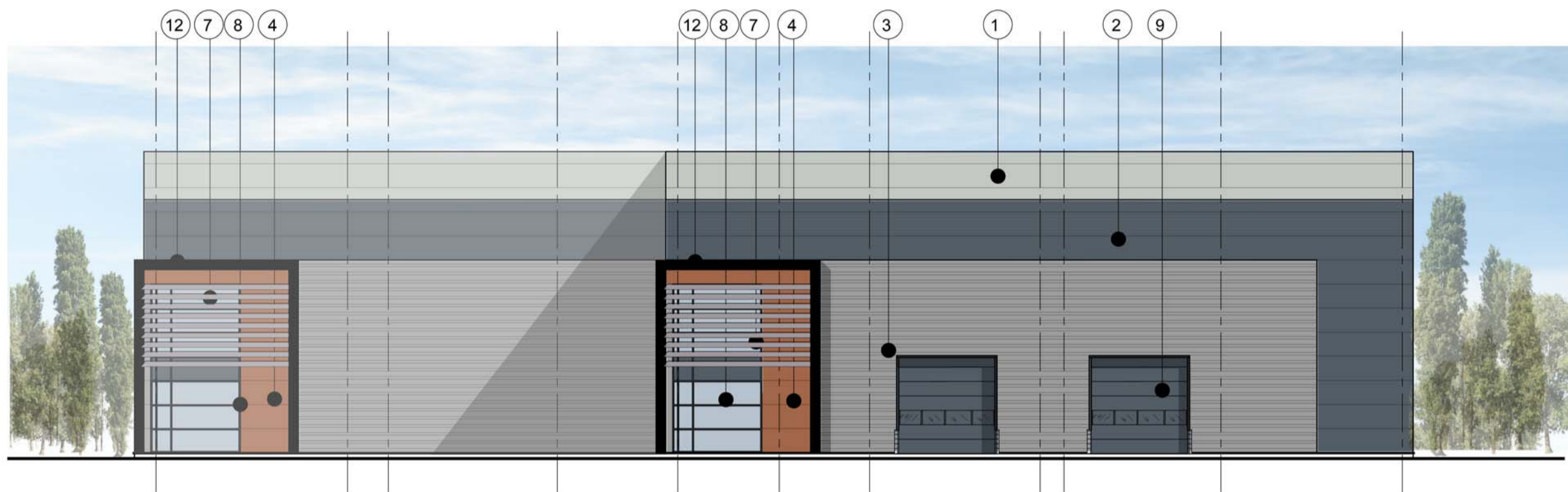
Drawing Status:	Planning
Drawn / Checked:	LAH / AJL
Date:	26.11.19
Scale:	1:200 @ 1
Drawing no:	Revision:
19203 P1005	C

PLANNING

- Dimensions are in millimeters, unless stated otherwise.
 - Scaling of this drawing is not recommended.
 - It is the recipient's responsibility to print this document to the correct scale.
 - All relevant drawings and specifications should be read in conjunction with this drawing.



South Elevation
 Scale : 1:200



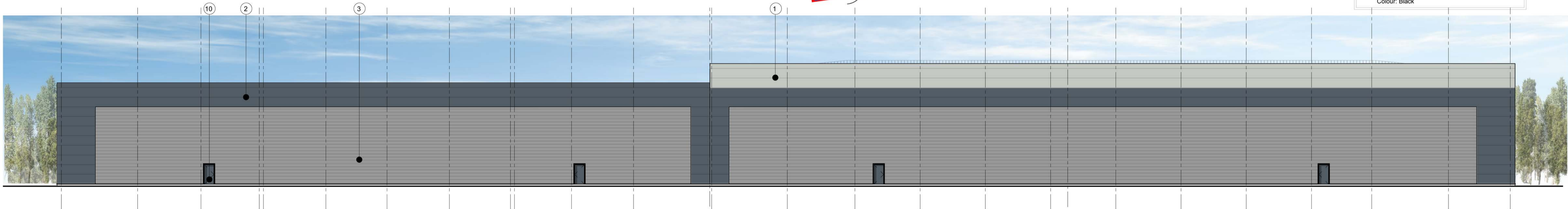
East Elevation
 Scale : 1:200



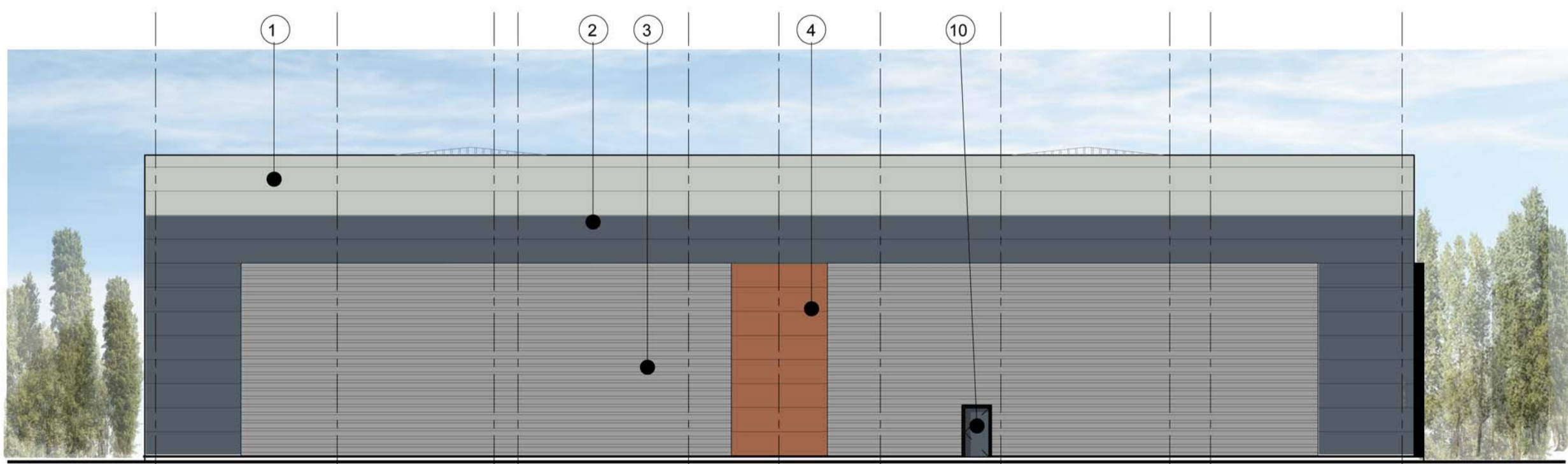
Key Plan
 Scale : 1:1000



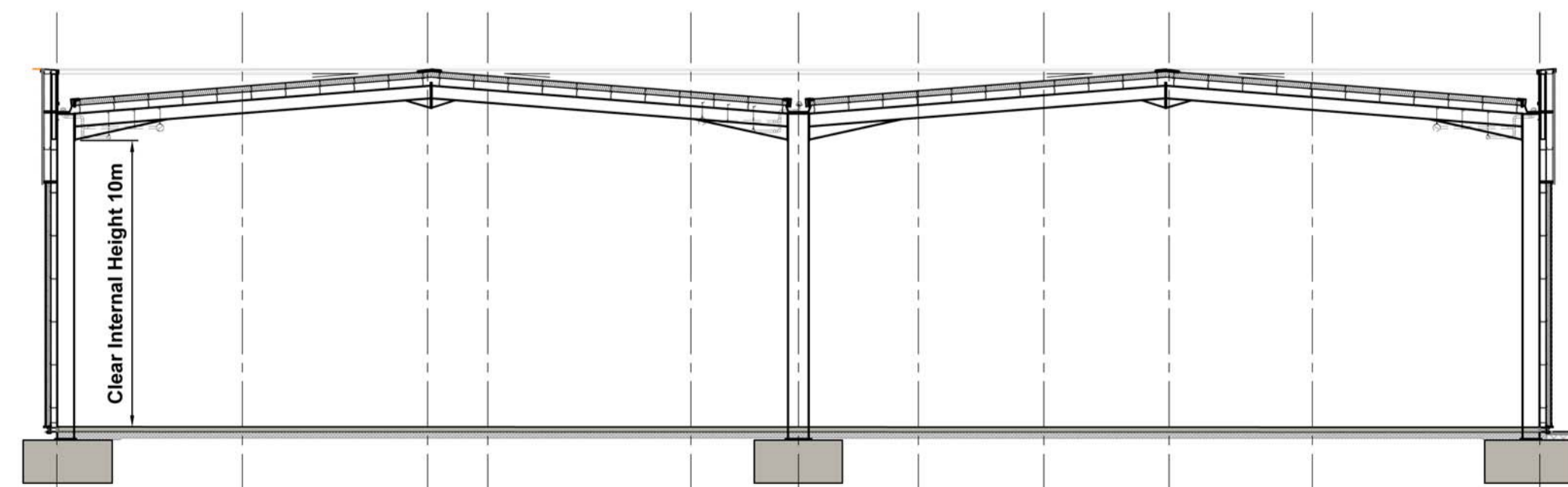
- Key**
1. Horizontally laid trapezoidal wall cladding
 Finish Tata Steel Colorcoat HPS200 Ultra
 Colour: Goosewing Grey (RAL 7038)
 2. Horizontally laid micro-rib cladding
 Finish Tata Steel Colorcoat Prisma
 Colour: Anthracite (RAL 7016)
 3. Horizontally laid trapezoidal wall cladding
 Finish Tata Steel Colorcoat HPS200 Ultra
 Colour: Pure Grey (RAL 000 55 00)
 4. Horizontally laid trapezoidal built up wall cladding
 Finish Tata Steel Colorcoat Prisma
 Colour: Seren Copper
 5. Horizontally laid micro-rib cladding
 Finish Tata Steel Colorcoat Prisma
 Colour: White
 6. Polyester powder coated aluminium windows
 with double glazed sealed unit
 Colour: Black
 7. Louvre/ Brise Soleil
 Finish: Tata Steel Colourcoat HPS200 Ultra
 Colour: White
 8. Aluminium curtain walling
 Finish: Polyester Powder Coated
 Colour: Black
 9. Overhead sectional doors with Level Access
 Colour: Anthracite
 10. Personnel Doors
 Finish: To match adjacent cladding
 Colour: Anthracite
 11. Overhead sectional doors with dock leveller
 Colour: Anthracite
 12. 3.0mm Aluminium goal post feature flashing
 Finish: Polyester Powder Coated
 Colour: Black



North Elevation
 Scale : 1:200



West Elevation
 Scale : 1:200



A-A Section Unit 1
 Scale : 1:200



E	Prowall extent decreased.	LAH	MT	16.12.21
D	Drawing updated to suit 40 meter arrangement.	LAH	MT	19.10.21
C	Drawing updated to suit 40 meter arrangement.	LAH	MT	19.10.21
B	Drawing Notes Clarified.	LAH	AJL	07.01.19
A	Initial Issue	LAH	AJL	29.11.19
rev	amendments	by	ckd	date

Industrial Scheme, Fleet

Elevations

CAUDWELL



Newark Beacon Innovation Centre, Cafferata Way, Newark, Nottinghamshire NG24 2TN
 t +44 (0)1636 653027 f +44 (0)1636 653010 e info@umcarchitects.com

Drawing Status:	Planning
Drawn / Checked:	LAH / MT
Date:	12.10.21
Scale:	1:200 1
Drawing no:	Revision:
19203 P1005	E

PLANNING

0.7mm thick galvalloy coated parapet flashing.
 Finish: Tata Colorcoat HPS200 Ultra
 Colour: Goosewing Grey (RAL 7038)

0.7mm thick CA 32 1000W trapezoidal profiled single sheet cladding to the inside of the parapet.
 Finish: Tata Colorcoat HPS200 Ultra
 Colour: Goosewing Grey (RAL 7038) with matching flashing to roof.

Void between gutter and wall to be insulated with rigid board insulation and Afasbond FR canister applied insulation to fill gaps as required & air sealed with internal closer flashing with 100mm overlap at joints.

CA 32 1000R or similar twin skin trapezoidal profiled built up roof cladding to achieve a minimum performance 'U' value as stated in Part L model & 25 years system guarantee comprising:
 - 0.7mm thick CA32 1000R profiled galvanised roof sheet with Tata Colorcoat HPS200 Ultra finish.
 Colour: Goosewing Grey (RAL 7038) (Signature Colour)
 - 0.7mm thick liner panel enamel finish
 Colour: Bright White

Caskade Premier membrane lined gutters (single skin or insulated depending on location). Eaves gutter material will be a minimum 1.2mm thick nominal pre-galvanised steel, complete with 1.2mm PVC pre-laminated membrane with Rockwool LPCB approved insulation core. Internal lining finish to be bright white 901 (similar approved)
 To be linked to a siphonic system to main roof to specialist design.

Horizontally laid composite micro-rib profiled panels to achieve a minimum performance 'U' value to meet the Part L model & 25 years system guarantee.
 Colour: Goosewing Grey (RAL 7038) / Anthracite (RAL 7016)

Allowance for double cladding rails/ additional steel in order for face of microrib panel to extend beyond trapezoidal built up system.

0.7mm thick galvalloy coated flashing to be insulated with 60mm thick board insulation with Afasbond FR canister applied insulation to any gaps to be fixed to the base of the PFC and enclosed with 0.7mm thick white galvalloy enamel coated internal closer flashing, & air sealed with internal closer flashing.
 Finish: Tata Colorcoat HPS200 Ultra
 Colour: to match adjacent cladding

Horizontally laid micro-rib profiled panels to achieve a minimum performance 'U' value to meet the Part L model & 25 years system guarantee. CA twin therm 300MR (microrib)
 Colour: White (RAL 9003)

Detail C Scale 1:20

0.7mm thick galvalloy coated cill flashing to be insulated & air sealed with internal closer flashing with 5° slope
 Finish: Tata Colorcoat HPS200 Ultra
 Colour: to match adjacent cladding

Horizontally laid micro-rib profiled panels to achieve a minimum performance 'U' value to meet the Part L model & 25 years system guarantee. CA twin therm 300MR (microrib)
 Colour: White (RAL 9003)

1st floor slab to consist of the following floor build up:
 Composite insitu concrete slab on permanent steel formwork in accordance with Structural engineers details. Office area to receive Kingspan RMC600 or similar access floor on a 600 x 600 grid providing a minimum of 150mm clear void.

75mm Rockwool SP Firestop slab to achieve 60 minute fire rating as per manufacturers recommendations and details

Underside structural deck at undercroft to be insulated to achieve minimum performance 'U' value for first floor office. Insulation to be of non-combustible material, with appropriate fixing method to achieve fire performance criteria in accordance with Part B.

0.7mm thick galvalloy coated head flashing to be insulated with 60mm thick board insulation with Afasbond FR canister applied insulation to any gaps to be fixed to the base of the PFC and enclosed with 0.7mm thick white galvalloy enamel coated internal closer flashing, & air sealed with internal closer flashing.
 Finish: Tata Colorcoat HPS200 Ultra
 Colour: to match adjacent cladding

Detail B Scale 1:20

Window to be Kawneer or Schuco thermally broken system comprising polyester powder coat aluminium mullions and transoms. Openable windows to equate to 1/20 of floor area of the room.
 Glazed finish: 6mm Antisun glazed outer pane (grey tint) with 12mm argon filled air gap with a 6mm clear inner pane
 Frame Colour: Anthracite (RAL 7016) White pressed metal flashing to interior undercroft.

Reinforced ground floor slab with power floated finish to an FM2 standard to be designed in accordance with Structural engineers details. Floor build upto achieve a minimum performance 'U' value to meet the Part L model.

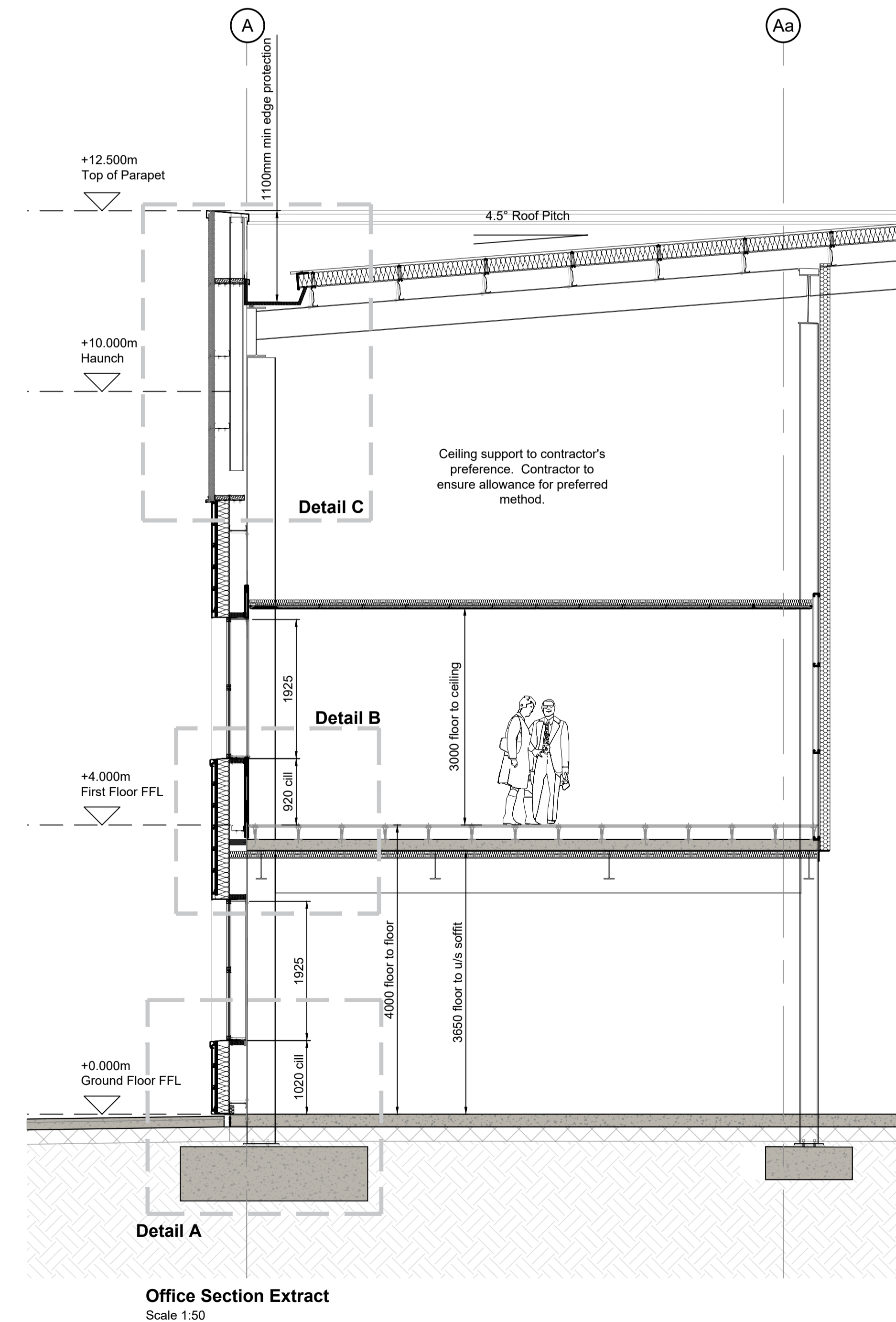
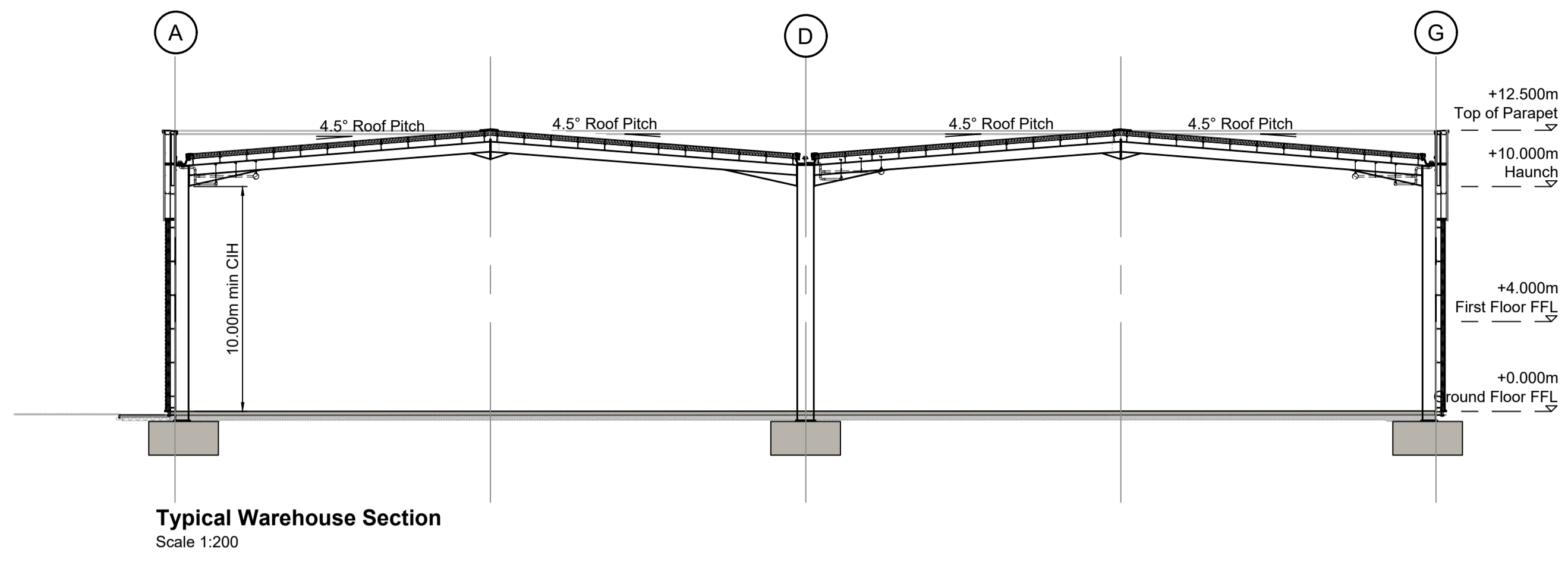
50mm edge insulation to slab to reduce cold bridging

PFC ground beam is indicative to client and main contractors preference. To structural engineers details

Allowance for underslab insulation to be made subject to part L model.

Foundation depth and type to be determined by structural engineer to suit ground conditions and design loadings.

Detail A Scale 1:20



rev	amendments	by	ckd	date
Industrial Scheme, Fleet				
Typical Sections Unit 1				
CAUDWELL				
umc architects				
Newark Beacon Innovation Centre, Cafferata Way, Newark, Nottinghamshire NG24 2TN t: +44 (0)1636 653027 f: +44 (0)1636 653010 e: info@umcarchitects.com				
Drawing Status:	Tender			
Drawn / Checked:	MT / AIL			
Date:	27/05/2021			
Scale:	As noted @ 1			
Drawing no:	Revision:			
19203 T1002	A			

TENDER

